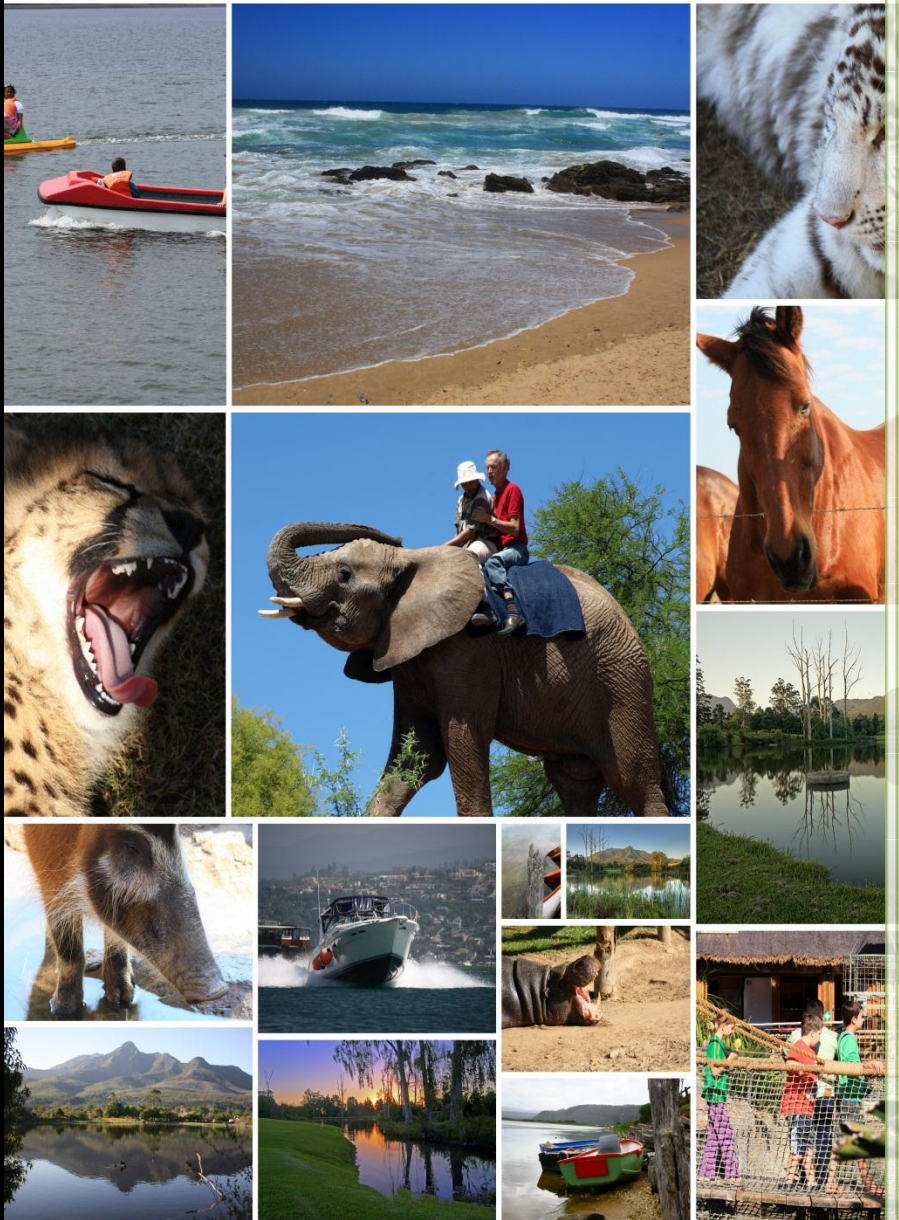




Things to do in the Garden Route



Tel 044 8746549

www.georgelodge.co.za

info@georgelodge.co.za

Here is a list of activities in the Garden Route as well as a list of Restaurants; our shuttle service is available at an additional fee to take you to all these places. We also offer a service to make your reservations with any of these places. For day excursion we can arrange all the activities for you and make payment to all the appropriate places and you just pay us the all inclusive amount. If you wish to have a picnic basket for the day this can be arranged at an additional cost, please discuss this with our receptionist.

Table of Contents

34 South (Knysna)	6
Abseiling in the Kaaimans George (Wilderness)	6
Admiral's Buffet Restaurant (Mossel Bay)	6
Adventureland Plett (Plettenberg Bay)	7
Barnyard Theatre Plett (Plettenberg Bay)	7
Beach Tree Restaurant (Mossel Bay)	7
Beer Tasting & Tour at Mitchells Brewery (Knysna)	8
Big Blu Tapas Bar (Mossel Bay)	8
Black Horse Trails (Wilderness)	8
Bloukrans Bridge Bungee Jump (Tsitsikamma)	9
Blue Olive (Wilderness)	9
Bramon Wine Estate (Plettenberg Bay)	10
Brenton Blue Butterfly Reserve (Brenton on Sea)	10
Browse The Scarab Craft Market (Sedgefield)	10
Buy African Curios at Jacana (Mossel Bay)	11
Cango Caves Tours (Oudtshoorn)	11
Canoeing & Cycling Tour in Wilderness (Wilderness)	11
Canoeing on the Knysna Lagoon (Knysna)	12
Cheries Riding Centre (Sedgefield)	12
Cinnamon Boutique Restaurant (Wilderness)	12
Close Encounter Whale Watching Cruise (Plettenberg Bay)	13
Cocktails at Lookout Deck (Plettenberg Bay)	13
Cornuti (Knysna)	14

Day Sailing Charter with Springtide (Knysna)	14
Day Trails Along the Garden Route (Sedgefield)	14
De Wingerdt Restaurant (Riversdale)	15
Deep Sea Fishing (Mossel Bay).....	15
Dine aboard the Paddle Cruiser (Knysna)	16
Dine at Emily's Restaurant (Plettenberg Bay)	16
Dine at Sand at The Plettenberg (Plettenberg Bay)	16
Dine in Style at Palms Wilderness (Wilderness).....	17
Doubleshot Coffee Bar (Plettenberg Bay)	17
Drumming Experience - Find Your Rhythm (Knysna)....	17
Eastern Head Café (Knysna).....	18
Eden to Addo Hike (Knysna to Addo).....	18
Explore the Keurbooms River Reserve (Keurboomstrand)	19
Fishing at Botlierskop Game Reserve (Little Brak)	19
Game Drive at Plett Game Reserve (Plettenberg Bay)	19
Game Drive in the Garden Route (Albertinia)	20
Go Gambling at the Garden Route Casino (Mossel Bay)	20
Go Surfing in Still Bay (Still Bay)	20
Gourits Bridge Bungee Jump (Gouritsmond)	20
Harry B's (Knysna)	21
Hartenbos Waterpark (Hartenbos)	21
Heal yourself at the House of Aloes (Albertinia).....	22
Het Vijfde Seisoen (George)	22
Hike the Dolphin Trail (Tsitsikamma)	22
Hiking in the Robberg Nature Reserve (Plettenberg Bay)	23
Hiking Trails in Still Bay (Still Bay)	23
Horseback Safari at Plett Game Reserve (Plettenberg Bay)	23
île de pain (Knysna)	24
Interact with Elephants (Plettenberg Bay).....	24

_Toc342309979

Jazzbury's Restaurant (Mossel Bay)	25
Jukani Wildlife Ranch & Care Centre (Mossel Bay)	25
Kafe Serefé (George).....	25
Keurbooms River Ferry (Keurboomstrand)26_Toc342309987	
Kitesurfing in the Garden of Eden (Sedgefield)26_Toc342309989	
Knysna Friday Sundowner Cruise (Knysna)	26
Knysna Heads Oyster Experience (Knysna)	26
Knysna Sunset Cruise (Knysna)	27
Kurland Food Market (Plettenberg Bay).....	27
La Locanda (George).....	27
Lawnwood Snake Sanctuary (Plettenberg Bay)	28
Le Fournil de Plett (Plettenberg Bay)	28
Lookout Art Gallery (Plettenberg Bay)	29
Nguni Restaurant (Plettenberg Bay)	29
Noah's Park Wolf Sanctuary (Plettenberg Bay)	29
Ocean Encounters (Plettenberg Bay)	30
Old Nick Village (Plettenberg Bay).....	30
Outeniqua Farmer's Market (George)	30
Outeniqua Hiking Trail (George to Plettenberg Bay).....	31
Outeniqua Transport Museum (George).....	31
Oyster Farm Tour (Knysna).....	31
O'Pescador Restaurant (Knysna)	32
Paraglide with Cloudbase Paragliding (Wilderness).....	32
Pembreys Restaurant (Knysna).....	32
Picnic amongst the Elephants (Little Brak)	33
Plett Fishing Charters (Plettenberg Bay).....	33
Plett Market on Main (Plettenberg Bay).....	34
Plett Puzzle Park (Plettenberg Bay)	34

Pomodoro Restaurant (Wilderness).....	34
Prêt-à-Pot (Plettenberg Bay)	35
Qolweni Community settlement (Plettenberg Bay).....	35
Quad Biking in the Garden Route (George)	35
Relax in Dana Bay (Dana Bay).....	36
Ride an Ostrich at Ostrich Show Farm (Oudtshoorn)	36
Ristorante Enrico (Plettenberg Bay)	36
Riversdale Riding School (Riversdale)	37
Sails Family Restaurant (Wilderness)	37
Scenic introductory flight lesson (Mossel Bay)	37
Scotty's Restaurant and Bar (Plettenberg Bay).....	38
Sea Kayaking in Plettenberg Bay (Plettenberg Bay)	38
Seal Island Cruises (Mossel Bay)	38
Sedgefield Classic Cars (Sedgefield)	39
See the Pallingat Eels (Still Bay)	39
Serendipity Restaurant (Wilderness)	39
Shark Cage Diving (Mossel Bay)	40
Shop at the Knysna Friday Market (Knysna)	40
Shopping at Langeberg Mall (Mossel Bay).....	40
Shopping at Milkwood Village (Wilderness)	41
Skydive in Mossel Bay (Mossel Bay)	41
Skydive in Plett (Plettenberg Bay)	41
Surf Café (Plettenberg Bay)	42
Tandem Jump above the Bay (Mossel Bay).....	42
Tenikwa Wildlife Awareness Centre (Plettenberg Bay)	42
The Anchorage (Knysna).....	43
The Bay Cafe (Herolds Bay).....	43
The Dry Dock Food Co (Knysna).....	44
The Girls (Wilderness)	44

The Harkerville Hike (Plettenberg Bay)	44
The Heath (Plettenberg Bay).....	45
The Heath	45
The Kingfisher Restaurant (Mossel Bay)	45
The Kitchen Café (Plettenberg Bay)	46
The Lemon Grass Restaurant (Plettenberg Bay)	46
The Lighthouse Restaurant (Mossel Bay)	46
The Lost Plot (Knysna).....	47
The Old House Shop (Plettenberg Bay)	47
The Red Barn Restaurant & Country Store (Knysna)	47
The Rose Restaurant (George)	48
The Table (Plettenberg Bay).....	48
The Theatre at the White House (Plettenberg Bay)	48
Timberlake Farm Stall & Organic Food (Sedgefield)	49
Vaaljapie Station Restaurant (Little Brak)	49
Views Restaurant (Wilderness)	50
Visit Birds of Eden in Plettenberg Bay	50
Visit Feathers Gallery (Knysna).....	50
Visit Renette's Candle Studio (Knysna)	51
Visit the Cape Seal Lighthouse (Plettenberg Bay)	51
Vleesbaai 4x4 Dune Route (Vleesbaai).....	52
Whale & Dolphin Watching Cruises (Plettenberg Bay)....	52
Whale Watching Cruise with Ocean Safaris	53
Wild Oats Community Farmers Market (Sedgefield).....	53
Zucchini Restaurant (Wilderness)	53

34 South (Knysna)

Address: Shop 19, The Waterfront Knysna Quays, Waterfront Drive, Knysna, Garden Route

Telephone: +27 (0)44 382-7331 **Opening hours:** Booking recommended.

Describing themselves as indefinable, not a deli, plain restaurant or just a bar, we like to think of 34 South as an 'experience'. I can tell you personally that I never go through Knysna without stopping by. 34 South has got it ALL – a sushi bar; delicious hot gourmet meals for cold days and refreshing, beautiful salads for warm days; cocktails; beautiful wines; the best seafood; deli foods; a full gift store and an enviable location in the Knysna waterfront.



Open from morning until late, the menu is vast. Take a seat and peer out at the yachts and people milling about, while you drink in the beautiful aromas wafting about the restaurant. There are many delicious treats to choose from the deli counter, to make up your own salad or sandwich. Yummy delights such as pickled calamari heads, pate, herrings, dolmades, a variety of olives, artichokes, dips and oysters. A dedicated revolving sushi bar delivers fresh California rolls and fresh fish as you wait. The main menu beckons with lip-smacking rib-sticking fare such

as the red Thai mussel pot, seafood bisque, seafood jambalaya, linefish espetada, paella, crab curry, queen and king prawns and crayfish. Remember to order a bottle of crisp white wine with your seafood or a cocktail if you're feeling adventurous on your holiday!

34 South continues to impress with offerings such as kassler chops, Cajun ostrich fillet and curries, all served in generous portions, so always come hungry. Finish off your 34 South 'experience' with one of the many impressive looking cakes, desserts or pastries - the baklava, or a slice of good old South African milk tart sound good to us.

ABSEILING IN THE KAAIMANS GEORGE (WILDERNESS)

Address: Eden Adventures, Wilderness National Park, Garden Route.

Telephone: +27 (0)44 877-0179 or +27 (0)83 628-8547 **Opening hours:** By arrangement from 13h30 to 16h30.

The serene Kaaimans Gorge holds one of the most beautiful abseil sights you will find. You have a chance to do two 45m abseils right next to a magnificent waterfall. The first abseil is an easy one to get you used to the idea of trusting the ropes and the second one is slightly more technical, however just as exhilarating.



What also makes this sight special is that you land in a canoe at the bottom. You need not have abseiled before, however it is not for the faint-hearted! It is also important to remember not to wear slippery shoes

ADMIRAL'S BUFFET RESTAURANT (MOSSSEL BAY)

Address: Garden Route Casino, Spekboom Road, Mossel Bay, Garden Route

Telephone: +27 (0)44 693-3900 **Opening hours:** Monday to Sunday from 12h00 to 16h00 and 17h00 to 22h00.



Overlooking a golf estate, Admirals is a buffet style restaurant, serving a carvery your mother-in-law would envy! Harkening back to a time when oxtail stews and roast beef was the order of the day, patrons can expect all their favourite traditional food and some unusual ones too.

Starters include light salads, mussels in cream and traditional South African samoosas. For mains, whether you're a meat or seafood lover, you'll find your favourites

in this buffet. Delicious lamb, roast chicken and beef are all served with crispy roast potatoes and vegetables. Rib-sticking fare indeed! Enjoy a piece of fish cooked to perfection, with lemon wedges, chips or rice - or both! Steaks are perfectly prepared to your taste as you fill your plate with delectable things that catch your eye. The more adventurous might want to try the Impala, Crocodile, Mopani worms, Kangaroo, Turkey hearts or Zebra on offer! Finally, nobody can resist a dessert buffet - it's a fact! Try a taste of the peppermint tart or sit back with a cup of coffee and a sticky toffee pudding.

ADVENTURELAND PLETT (PLETTENBERG BAY)

Address: On the N2 between Plett and Knysna, Garden Route **Telephone:** +27 (0)44 532-7869 **Opening hours:** Every day (water based activities are every day September to April only)



Want a break from the beach but still need a way to keep cool and entertain the kids during the summer months? Try Adventureland in Plettenberg Bay. The park offers a 75m supertube, a 25m mini-tube, a 'Raging Rapid' tube, a 'Kamakazee' slide and a 12m Free Fall slide.

Mini versions of the Free Fall and Kamakazee slides are also available for youngsters and these lead into a separate baby pool for extra safety. There are also trampolines, jungle gyms and swings for those who tire of the water. Braai facilities are available for those who want to make a day of the activities on offer at Adventureland.

BARNYARD THEATRE PLETT (PLETTENBERG BAY)

Address: Askop Road - The Craggs, Plettenberg Bay, Garden Route. **Telephone:** +27 (0)44 533-5432 **Opening hours:** Contact the box office to find out what is currently showing and times.

This Barnyard Theatre opened its doors in 1996 and is a unique experience with only the best South African and



international artists performing.

The Barnyard Theatre venue is a picnic style which began as a farm theatre that offered Plettenberg Bay residents the opportunity to eat, drink and be merry while being entertained. It has only grown from strength to strength.

Don't forget you should arrive early with a fully stocked picnic basket and settle down with your mates at one of the large wooden tables. And if you feel like a cup of tea or coffee or a slice of cake or two you can buy this at the venue.

BEACH TREE RESTAURANT (MOSSEL BAY)

Address: Mossel Bay, Garden Route, Western Cape

Telephone: +27 (0) 44 691 1325 **Opening hours:** Please enquire.

Beach Tree Restaurant stands out as a beautiful venue due, in part, to its interesting architecture, creating the impression that it is a tree house suspended above water. The 'tree bar' made from wood, gives the restaurant a breezy ambiance and immediately transports patrons to the island holiday of their dreams!



Famous for cocktails in summer and red-wine-by-the-fire drinking in winter, you needn't only pencil in a visit in summer alone. With light and hearty fare on the menu, Beach Tree is a treat any time of the year. Enjoy light dishes and sip on cocktails as you sit under the lapa around the cool waters with friends

and family. Tuck into ribs, or something off the grill for mains, including choice cut fillet with a selection of sauces and accoutrement. With its world-influenced menu, there's something to suit the taste of every member of the family. Savour the casual dining experience and make a night of it!

BEER TASTING & TOUR AT MITCHELLS BREWERY (KNYSNA)

Address: Arend Street, Knysna Industria, Knysna, Garden Route. **Telephone:** +27 (0)44 382-4685

Opening hours: Operating Hours are Monday - Friday from 08h00 to 17h00. Please contact us for Tour & Tasting Times.



The Tour Guide will lead you into the heart of our little Brewery where we will share the secret of brewing fine natural ales. From the Grist Hopper to the Mash Tun, from the Kettle to the Whirlpool; experience the chill of the first and secondary fermentation cellars. Then back to the Sales Office to do the tasting of our products.

Experience the natural goodness whilst contemplating the reasons for not ever wanting to leave 'The Town' that was made famous by Mitchell's Knysna Brewery! Alternative tour times can be arranged for groups of 6 and more on weekdays only.

BIG BLU TAPAS BAR (MOSSEL BAY)

Address: Point Road, Mossel Bay, Garden Route. **Telephone:** 27 (0)44 691 2010 **Opening hours:** Please enquire.

The only tapas restaurant in Mossel Bay, with one of the most breathtaking views along the Garden Route, Big Blu represents everything you've been looking for in a favourite holiday joint. Eating tapas is all about socializing and the enjoyment of different tastes and flavours, encouraging an atmosphere that is alive with chatter and laughter. Big Blu has a laid-back ambiance, perfectly rounded off with the crashing of the waves below.



Kicking off with breakfast, Big Blu offers a small breakfast menu, for the peckish, through to the hungry. Lunch and dinner starters include mussels, calamari and oysters. The mains menu is simple: expect dishes such as the English favourite, steak, egg and chips; beef burgers; spare ribs and other delicious 'holiday' food. Big Blu is the place to go for an evening razzle and cocktails at sunset, but is also laid back enough during the early evening, to sit back, soak up the views and relax.

BLACK HORSE TRAILS (WILDERNESS)

Address: Wilderness, Garden Route **Telephone:** +27 (0)82 494-5642 **Opening hours:** Open seven days a week and trails leave approximately at 10h00 and again at 15h00.



Black Horse Trails can be found at the base of the Outeniqua mountain range in the Wilderness. Named after the pitch black Friesian horses offered as their trail horses of choice, Black Horse Trails have chosen wisely, as these gentle giants are soft-natured, beautiful rides. It is a breath of fresh air to encounter a trail company that chooses their horses wisely. These easy-going, majestic horses will add magic to your memories of riding out in the beautiful forests. Amateur riders are welcome will be provided for accordingly. There are a few trail rides to choose from, which include:

One and a half hour ride This ride ventures into the eucalyptus forest, and does a nice circuit in the plantation before returning home. **3 hour ride** This is their most popular ride; though the pine plantations into the indigenous forest to the waterfall, perfect for a swim. **Special occasion rides** A 3 hour ride to the waterfall, but on this ride it is only the trail guide and yourselves that venture out, as to create a more intimate experience. Then enjoy a relaxing time at the waterfall with your partner with Crackers & Pâtés, Chocolates & Bubbly. (Book in advance)
Abundant bird and animal life make these trail rides even more memorable. We can't think of a more beautiful way to explore the world-famous forests of the Garden Route.

BLOUKRANS BRIDGE BUNGEE JUMP (TSITSIKAMMA)

Address: Bloukrans Bungy, Bloukrans Bridge, Tsitsikamma, Garden Route. **Telephone:** +27 (0)42 281-1458 **Opening hours:** Open daily from 09h00 to 17h00.

Situated along the Garden Route at the Tsitsikamma Forest Village Market, just 40km east of Plettenberg Bay along the N2 Highway you will find the highest single span arch bridge in the world. You can experience the thrill for yourself!



The ultimate thrill, the Bloukrans Bridge is the highest commercially operated Bungy Jump in the world. We secure you in a full body harness and proceed to walk along a specially designed catwalk (216m long), which is suspended beneath the road surface, which will then lead you to the top of the arch - 216 meters above the Bloukrans River. Here you will be given final instructions by highly experienced staff, a countdown and off you go! Bloukrans utilizes pendulum bungy technology ensuring you the smoothest, most comfortable bungy jump possible. Bloukrans Bungy a Proud Guinness World Record Holder for the Highest Commercial Bungy Jump in the World at 216m! **Additional Reading:** For a first hand account of the Bloukrans Bungy see "[A Leap of Faith at](#)

[Bloukrans](#)".

BLUE OLIVE (WILDERNESS)

Address: Corner of George Road and Leilas Lane, Wilderness, Garden Route.

Telephone: +27 (0)44 877-0731 **Opening hours:** Please enquire. In its setting amongst beautiful, old Milkwood trees, with an expansive wooden deck, the Blue Olive offers patrons delicious and unpretentious food and atmosphere. The breakfast menu groans with decadent offerings, perfect for hungry holidaymakers! Lunch and dinner kick off with mouth-watering starters, including calamari tentacles, chicken livers sautéed in chilli, prawns and rocket and ostrich Carpaccio.



A perfect tapas venue, the Blue Olive has an extensive tapas menu, with morsels that will excite every taste sensation, from oysters, blue cheese and figs and pancetta and Brie to crumbed chicken with chilli mayo. For mains, the pasta menu offers unusual options, such as the chicken liver pasta, with either tagliatelle or penne; or the 'earth' pasta, with basil pesto, cherry tomato, butternut and feta, topped with fresh rocket. Vegetarians are catered for with many delightful dishes, including the artichoke pasta, with artichoke, olives, baby tomato, garlic, onion, white wine, Parmesan and basil.

A giant mushroom is stuffed with butternut & feta, drizzled with basil pesto as a vegetarian burger option, while the gourmet homemade beef & lamb patty, with caramelized onion and bacon would make any burger lover happy.

BRAMON WINE ESTATE (PLETTENBERG BAY)

Address: N2 The Craggs, Plettenberg Bay, Garden Route **Telephone:** +27 (0)44 534-8007 **Opening hours:** Monday to Sunday from 09h00 to 17h30.

Bramon Wine Estate, is a boutique vineyard of 5ha and is the first and only Estate this far East of the Western Cape, situated 20km East of Plettenberg Bay in a mountainous area called The Craggs.

This family run estate has broken new ground by pioneering vineyards in the Plettenberg Bay area, producing an award winning Methode Cap Classique sparkling wine and now a beautiful still wine. The Craggs has added to the range.



Having grown up on a wine farm in Worcester, Peter had an inherent passion for wine and working the land. On discovering a piece of land in The Craggs with gentle slopes and cool sea breezes, Peter found the conditions excellent for vine growth. The land was choked with wattle, gum and pine and needed to be cleared of all alien invasives to make way for what is now today a well manicured vineyard. The first vines, Sauvignon Blanc, were planted in 2000 pioneering wine growth in Plettenberg Bay which has subsequently been classified as a wine of origin region.

A coup for the area!

Having paved the way for 15 other wine farms in the region, Peter Thorpe hopes to create a 'Sparkling Wine Route' - adding yet another facet to the Jewel of The Garden Route.

BRENTON BLUE BUTTERFLY RESERVE (BRENTON ON SEA)

Address: Brenton On Sea, Garden Route.

Telephone: Dr DA Edge +27 (0)44 381-0014 in business hours only (08:00 to 17:00). **Opening hours:** Strictly by appointment only



The reserve is under the control and management of the Brenton Butterfly Trust and no visitors are allowed on an ad hoc basis. However there are limited tours of four people each twice a day from 5th to 25 th November and 5th to 25 th February each year, when the butterflies are active. The tours are at 12:00 and 13:00 and only if sunny and relatively wind free.

The Brenton blue butterfly, evident in late October until December, lives within one hectare of asteraceous coastal fynbos and its larvae depend entirely on the lower side of the leaves of *Indigofera erecta* for their food.

The home of one of the rarest butterflies in the world, the Brenton Blue Butterfly Reserve, is marked by a single signpost. Although the Brenton Blue Butterfly

Reserve effectively came into being in early 1998, it was only proclaimed as a Special Nature Reserve on 4 July 2003. Knee-high poles indicate the boundary of the nature reserve. The site extends over approximately 2ha and contains a mixture of coastal fynbos and coastal forest. The Brenton Blue shares its home with a wide variety of other insects, as well as mammal and bird species. The vegetation in the reserve is a complex mosaic of candlewood thickets and asteraceous fynbos. The reserve contains a large population of the food plant of the Brenton Blue butterfly, a small plant in the pea family with pink flowers. The Brenton Blue is a very rare National Treasure.

BROWSE THE SCARAB CRAFT MARKET (SEDFIELD)

Address: Scarab Village, Sedgfield, Garden Route.

Telephone: +27 (0)82 737-2655 **Opening hours:** Every Saturday morning from 08h30 to 13h00.

Shop at The Scarab Craft Market - The market boasts unique stalls with a good selection of arts, crafts, clothes, gifts, jewellery and delicious food. Each stall has its own special characteristic and holidaymakers, day visitors and tourists can spend a leisurely morning or afternoon browsing the numerous stalls.



The market is also home to Sedgfields weekly drumming event which takes place every Friday. Give The Scarab Craft Market a try - its a wonderful way to spend the day if the weather is not 100%!

BUY AFRICAN CURIOS AT JACANA (MOSSEL BAY)

Address: Jacana, Old Post Office Tree Square, Mossel Bay. **Telephone:** +27 (0)44 691-3588 **Opening hours:** Daily from 07h00 to 23h00. Jacana caters for the needs of tourists visiting the Bartolomeu Diaz Museum complex.

The store showcases a range of curios, clothing, accessories and gifts sourced from many different parts of Africa.



Jacana also stocks destination specific merchandise which is exclusive to Mossel Bay and illustrates the Town's colourful maritime history. Located in the Old Post Office Tree Square, Jacana offers extended trading hours to cater specifically for the needs of tour parties and guides - open every day from 07h00 in the morning until 11 at night! Pop in after dinner and do some last minute shopping!

CANGO CAVES TOURS (OUDTSHOORN)

Address: 29 kms from Oudtshoorn, Klein Karoo / Garden Route, Western Cape

Telephone: Various Operators or call the Caves directly on +27 (0)44 272-7410

Opening hours: Daily from 09h00 to 16h00, Tours depart every hour on the hour. Closed Christmas Day



The Cango Caves are a series of dripstone caverns that open into vast halls of towering stalagmite formations with names like 'the bridal couple', 'glass flower fantasy', 'weird cango candle' and 'the hanging shawl'.

Not all of the caves are open to the public - there is more than one section to the caves that took millions of years to form one of the world's great natural wonders - but the main sections are available for amazing exploratory subterranean walks that include fumbling around on all fours in an effort to see all that is viewable.

To view various day trip options please see [Cango Caves Tours](#). For additional information about the caves see [Cango Caves](#). Facilities at the Cango Caves includes a Restaurant, Curio Shop and an Interpretive Centre, scientifically designed to explain the Caves, and particularly their geology and history, in great detail.

CANOEING & CYCLING TOUR IN WILDERNESS (WILDERNESS)

Address: Eden Adventures, Wilderness National Park, Garden Route. **Telephone:** +27 (0)44 877-0179 or +27 (0)83 628-8547 **Opening hours:** By arrangement.



We begin with just over an hour of canoeing up the Touw River as we pass majestic yellowwoods and milkwoods, we may catch a glimpse of a Malachite Kingfisher or Knysna Loerie.

On our return, we stop for a short walk in the forest then back to Eden Adventures for some light refreshments. Finally, we drive to the "Map of Africa" viewpoint and embark on a scenic cycle (of which 7km is downhill) back to Eden Adventures - A must for everyone!

CANOEING ON THE KNYSNA LAGOON (KNYSNA)

Address: Lightleys River Runners, Phantom Pass Road, Knysna, Garden Route. **Telephone:** +27 (0)44 386-0007
Opening hours: By arrangement.

Hire a Canadian-style canoe for one or two people from Lightleys River Runners (The Boat People!). The canoes are easy to manoeuvre and they're great for romantics, ideal for birders, or charter one of our luxury, self drive house boats to explore the Knysna Lagoon for a single day.



And if you want to add real luxury to your romance, we'll provide a decadent picnic hamper complete with a bottle of bubbly and a platter of juicy, fresh Knysna Oysters.

CHERIES RIDING CENTRE (SEDFIELD)

Address: Redlands Farm, Sedgfield, Garden Route **Telephone:** +27 (0)82 962-3223 **Opening hours:** Open daily.
Cheries Riding Centre offers forest rides for either 90 minutes or two and a half hours. Refreshments are included in the price of these rides. A historical tour of the Redlands Estate and Arabian Horse Stud Farm is also offered - you will get to visit the first hunting lodge built in South Africa by Lord Barrington in 1864. The centre has beautiful, well trained horses to suit riders (and non riders) of every level.



CINNAMON BOUTIQUE RESTAURANT (WILDERNESS)

Address: Sanctuary Lane, Wilderness, Garden Route
Telephone: +27 (0)44 877-1324 **Opening hours:** Open for Sunday Lunch-Table D'Hote from 12h00 noon. Closed on Sunday and Monday nights.

Cinnamon Boutique Restaurant has been voted one of the top ten best restaurants in the Garden Route, by CXpress, Gastro Nomix and Seidelberg Wines, and judging by their menu, we think they are deserving of the accolades.



Situated within the guesthouse environs, patrons pass through tropical gardens before entering the ladies bar for their welcome drink. The setting is decadent - paprika red, with high-back chairs and fine silver cutlery. Order some fine bubbly and peruse the impressive starter menu, boasting a plethora of dishes comprising unforgettable flavour combinations.

The rosettes of smoked salmon on potato rosti, and fresh rocket leaves with pickled quail eggs, enhanced by a pomegranate and balsamic reduction look out-of-this-world, while the Tantalising Seafood Trio is a real South African gem of a dish, with a twist. The ostrich or springbok Carpaccio is served on a bed of watercress, with warm potato salad and the duck samoosas are another South African dish, with a twist, served with avocado mayo, cucumber ribbons and

Asian dipping sauce.

Highlights on the main menu, include the pepper fillet, fillet of fresh gunnard and the kudu fillet. Relax after dinner with a digestif from the bar, and enjoy a delicious dessert to round off a perfect, luxurious experience.

CLOSE ENCOUNTER WHALE WATCHING CRUISE (PLETTENBERG BAY)

Address: 1 Hopwood Street, Central Beach, Plettenberg Bay, Garden Route

Telephone: +27 (0)82 926-6664 **Opening hours:** Daily from 08h00 to 16h00 (weather permitting) Other times possible by prior arrangement.

Our Premium, Close Encounter cruises are conducted on our permitted whale watching vessel "Fatboy". This permit



allows our licenced boat to approach whales up to 50 metres. The whales may then move closer if they wish ... Whales are usually inquisitive and generally move closer and alongside the boat!

Only permitted boats may approach whales to this distance, all other sea vessels must maintain a 300m distance from the whales. 'Official' whale season, based on the presence of Southern Right Whales along our coastline, runs between July and November, however, we are fortunate to have Humpback Whales between April and January. Bryde's whales are seen along our coastline All year round, so there is always a chance of getting 'up close and personal' with whales in South Africa.

Whale Watching Cruise with Ocean Safaris

About Ocean Safaris: Ocean Safaris is a proud holder of one of a few Whale Watching permits allocated country-wide as well as being certified by Fair Trade in Tourism. We are SATSA boded and offset our carbon omissions through our affiliation with the Green Ticket. Taking a cruise with us will assure you of an exclusive, legal and environmentally sensitive encounter with our marine co-habitants while we actively participle in the documenting of valuable research on whales and dolphins that we encounter during your tour. This information is forwarded to government research departments. Sightings all year round include Common, Humpback and Bottlenose dolphins; Brydes whales; various sharks; Cape fur seals and pelagic birds among other surprises. During whale season (July to December) we conduct these awe inspiring close-encounter experiences with Southern Right and Humpback whales. We pride ourselves on having the right vessels for the job at hand. All our boats are specially designed for maximum viewing pleasure and are safety certified by SAMSA. Join us for the best "seafari" by far! This ocean adventure is nothing short of spectacular.

Cocktails at Lookout Deck (Plettenberg Bay)

Address: Lookout Restaurant, Lookout Beach, Plettenberg Bay, Garden Route

Telephone: +27 (0)44 533-1379

Opening hours: Summer: From 08h30 to 22h30. Winter: From 09h00 to 21h00.

If you're in Plett then the one thing you need to do is head off to The Lookout Restaurant & Deck for a cocktail or two. This is an iconic restaurant and popular hangout spot with its superb view over Lookout Beach.

During the whale season you can sit on the deck and see how many whales you can spot or in the height of summer



you can escape the heat and cool down with some cocktails from their extensive menu.

If you start to get a bit peckish not to worry they have something for all appetites. They offer scrumptious breakfast options from omelettes to full English, and the lunch and dinner menu offers a wide selection of dishes straight from the sea as well as pasta's, meat and chicken options and plenty of salads.

CORNUTI (KNYSNA)

Address: George Rex Drive, The Heads, Knysna, Garden Route **Telephone:** +27 (0)44 384-0408 **Opening hours:** Please enquire. With its exceptionally beautiful location on the edge of the ocean, and pared down, cool, décor, Cornuti is a pizza joint with a difference. It's swish hip décor and dramatic views serve as the perfect backdrop for



sexy sundowners. An impressive antipasti menu whets the appetite – perfect for enjoying with a chilled bottle of wine or with cocktails. The pizzas are just as fresh and crisp as the décor.

Kicking off with the exceptional pizza selection, expect to be blown away by pizzas like the verdure, with artichokes, asparagus, olives, white mushrooms, onions, green peppers and sundried tomatoes, the goats cheese and rosemary with aubergines, sundried tomatoes and fresh rocket, the pizza Calabria with wholewheat base, red pesto, goats cheese, sundried tomatoes, olives and rosemary or the cipolle e gorgonzola with mozzarella and gorgonzola, caramelized

onions, roasted garlic and rosemary.

For those who would prefer something from the mains menu, our favourites lean towards their pesce del giorno: fresh fish baked in olive oil with cherry tomatoes and spring onions, served on couscous and the seared tuna steaks, served sushi style on couscous with soya sauce, wasabi, pickled ginger and dhania.

A glance at a sample of the winter menu has us all drooling: gnocci al ragu: home-made potato dumplings with in our bolognese ragu. Pizza porcini with grilled porcini mushrooms, mozzarella, parsley, garlic and olive oil. Polpette cornucchi: home-style meatballs in tomato and basil, served the Italian way with spaghetti. The lamb shanks sounds rib-sticking and out-of-this-world, served with mashed potato and fresh veg, while the oxtail al forno is slow-cooked to hearty perfection in our wood-burning oven, served piping-hot in a red wine pomodoro sauce with mashed potatoes and fresh seasonal veg.

DAY SAILING CHARTER WITH SPRINGTIDE (KNYSNA)

Address: The Outeniqua Yacht is situated in front of Building 34 South.

Telephone: +27 (0)82 470-6022 or +27 (0)82 829-2740 **Opening hours:** By arrangement.

Spring Tide Sailing Charters gives you the opportunity to take a turn at the helm of the 50 foot yacht, Outeniqua. You



will be able to sail through the Knysna Heads – one of the most notoriously difficult sea passages in the world - definitely a sailing experience to be remembered. Cruises include sunset cruises, a days sailing, champagne breakfast as well as honeymoon and dinner charters.

Let our highly experienced crew take you on a lagoon cruise, out through the Knysna Heads and sail towards Buffalo Bay. On return, after anchor is weighed in the calm waters of the lagoon, feast on a spread of delectable Mediterranean delicacies and enjoy a refreshing swim before returning to the quays. The Outeniqua is a 50ft mono-hull and has been operating as a luxury sailing yacht since 1998. Hand built by owner and skipper, Stephan Pepler, her sleek lines are

built in local indigenous woods such as Yellowwood and Hard Pear.

DAY TRAILS ALONG THE GARDEN ROUTE (SEDFIELD)

Address: Various trails in Plettenberg Bay, Sedgfield, Mossel Bay, Garden Route **Telephone:** Not applicable **Opening hours:** By arrangement

Aside from the obvious and most famous hikes along the Garden Route, like the Otter Trail, the Oystercatcher Trail, the Dolphin Trail or the Tsitsikamma Trails, there are a host of other walks one can do in and around the numerous nature reserves on the Garden Route of the Western Cape.



Some of these include the walks in the Outeniqua Mountains, such as the Cradock Pass walk – a fairly taxing trail of around 12.5 kilometres that follows the

track of initial settler wagons down into the pass. The Goukamma Nature Reserve close to Sedgefield is a beautiful combination of fresh-water lake and coastal sand dunes that provides more than a couple of walking options such as the Beach Walk of 14 kilometres, the Goukamma to Groenvlei route, the Lake Walk and the Circular route. It helps that during whale season there is a good chance of spotting them here.

The Half-collared Kingfisher Trail starts just outside the Wilderness village and is a joy for birders, whilst walks along the Robberg Peninsular near Plett offer some wild, rugged coastline and incredible views, particularly the Point Circuit Trail. Harkerville Forest offers further walks through indigenous forest and shoreline, including a really short trail known as the Garden of Eden, whilst the Koumashoek Circuit close to Mossel Bay starts right up at the top of the Robinson Pass.

If you can, try to do the Moonlight meander, starlight stroll that has to take place at either full or new moon because of the necessity for low tide. The walk, from Swartvlei Beach to Gericke's Point is explored by torchlight at night and all the myriad rock pools explored in the process.

DE WINGERDT RESTAURANT (RIVERSDALE)

Address: De Doornkraal Historic Country House Boutique Hotel, 8 Long Street, Riversdale, Garden Route

Telephone: +27 (0)28 713-3838 **Opening hours:** Please enquire.

De Wingerdt Restaurant can be found in the idyllic vineyard setting of the De Doornkraal Wine Estate, which stretches



to the Vette River bordering the town of Riversdale. Steeped in history, De Doornkraal is surrounded by beautifully preserved historical homes, and the main dwelling is one of the original structures on the farm. De Wingerdt Restaurant boasts of their internationally influenced menu, making use of flavours from around the world. Using local ingredients, Chef de Cuisine Christopher Peppas creates magic with a menu bursting with flavour.

Spoilt for choice, patrons will have a hard time deciding between the impressive array of carefully curated starter dishes, ranging from bobotie spring rolls or Spanish style calamari, to Kudu Carpaccio and Yunon style pork ribs.

Unusual gourmet dishes with distinct international influences dominate the main menu, with dishes such as:

Stifado, (Greek style thick cut beef rump casserole with pearl onions and creamed potatoes); Country Style Lamb Shank; Marrakesh Lamb Tagine; Beef fillet with Thai seasoning and coconut milk, served with scented sticky rice and sambals. The Chicago Style Hamburger lightens the international mood, and is served with homemade tomato relish and potato wedges. Chef Peppas impresses with a traditional slow roasted Greek Lamb, using a whole square cut shoulder, served on a platter to table with Ya Ya's Patates, steamed vegetables, Pita breads & Tzatziki. Seafood dishes include Linefish Salsa Fresca; Norwegian Salmon; Squid in leeks and red wine and the whole baked linefish, for the whole table.

Finish off a perfect evening with crème brûlée or one of the many delicious desserts on the menu.

DEEP SEA FISHING (MOSSSEL BAY)

Address: Garden Route Adventure Centre, 1 Marsh Street, Mossel Bay, Garden Route. **Telephone:** +27 (0)44 691-3182 **Opening hours:** By arrangement. Please enquire.

Deep sea fishing for the brave. Leaving early in the morning or even evening trips. These are for the fishing enthusiast and a fun and rewarding experience.



Nothing needs to be taken on board except your own personal stuff. Fishing rods, bait and refreshments are organised by the operators to ensure you have a fun filled experience and hopefully catch that "Big one".

This is a popular adventure and booking in advance is essential. Group bookings can be made, we cater for up to 40 people. Don't forget your hat, sunscreen and towel. This is a adventure of a lifetime.

DINE ABOARD THE PADDLE CRUISER (KNYSNA)

Address: Remembrance Lane, off Waterfront Drive, Knysna, Garden Route. **Telephone:** +27 (0)44 382-1693 **Opening hours:** Lunch cruise at 12h30 and evening cruise at 18h15.

The Paddle Cruiser is South Africa's only paddle-driven vessel, offering a unique and unforgettable experience on the Knysna Lagoon. For a unique cruise and dining experience - with a modern, hip and trendy twist - The Paddle Cruiser offers both lunch time (12h30 departure) and evening (18h15 departure) cruises. Turn your evening meal into a special occasion - depart at sunset, cruise to the famous Knysna Heads at twilight and return under the stars and twinkling lights of the town.



The Paddle Cruiser offers delicious meals, enjoyed at lunch time during a well-deserved midday break or at the end of the day during a magical sunset cruise. It is the ideal opportunity to unwind and enjoy a cocktail, locally brewed beer or a fine wine from an award-winning selection, while savouring fresh Knysna oysters. Lunch time cruises offer a Tapas Mediterranean a la carte selection while a 3-course

Mediterranean buffet is available in the evening, with matching 5 star service guaranteed. The Paddle Cruiser has been graded as a 4 star restaurant by the SA Tourism Grading Council - the only floating restaurant in South Africa with this grading!

DINE AT EMILY'S RESTAURANT (PLETTENBERG BAY)

Address: Rietvlei Road, Plettenberg Bay, Garden Route. **Telephone:** +27 (0)44 533-2982 **Opening hours:** Booking is essential. Monday from 18h00 until late. Tuesday to Sunday from 12h00 to 15h00 and 18h00 until late.

Emily Moon is one of those one-in-a-million restaurants, booked by international guests long before arrival, yet surprisingly without a hint of pretension. Prepare to be blown away by the magical setting, eccentric décor made up of curiosities and collectables, lending it an 'Out of Africa' feel, mixed with unique Moroccan tinged features - and the promise of dressed-up delectable food. The Emily Moon experience is about lingering. It's about laughing. It's about soaking up the atmosphere and letting go. With seating indoors, outdoors, on the terrace and around the pool, patrons are invited to take part in something very special when sojourning at Emily's. Talented chef, Larry Steenkamp, possesses the unique ability to make simple food look and taste out-of-this-world.



The simple lunch and dinner menu focuses on quality, not quantity, with dishes such as crispy tempura vegetables with sweet chilli and wasabi mayonnaise, or tuna & sesame spring rolls to start. Home-smoked beef Carpaccio and Asian beef salad go down a treat too. For mains, the grain-fed fillet béarnaise melts in your mouth, as does the beef Rogan Josh, served with basmati rice, naan bread and sambals. The grilled sirloin with de Paris butter, is paired with tempura onion rings and mash. Round off dinner with decadent orange crème brûlée, chocolate fondant or the mind-blowing strawberry and crème Anglaise Millefeuille.

DINE AT SAND AT THE PLETTENBERG (PLETTENBERG BAY)

Address: Look Out Rocks, 40 Church Street, Plettenberg Bay

Telephone: +27 (0)44 533-2030 **Opening hours:** Breakfast from 07h30 to 10h30. Lunch from 12h00 to 13h00 Dinner from 18h30 to 22h00.

Looking for somewhere to indulge a little bit over a meal? Then why not book yourself a meal at Sand at the five star graded The Plettenberg. The restaurant is open daily for breakfast, lunch and dinner and the menu offers sheer decadence. Breakfast options include fresh fruit and Greek style yoghurt, omelettes and fry ups, healthy muesli and cereals as well as a selection of cold meats and cheeses. You can even have waffles and French toast if you feel like something sweeter.

The lunch menu is seasonal and so you can be assured of the best local and



seasonal dishes. For dinner why not try the tasting menu or if you prefer to stick to one dish you can choose from the extensive a la carte menu. The wine list will add the perfect accompaniment to any meal.

DINE IN STYLE AT PALMS WILDERNESS (WILDERNESS)

Address: Palms Wilderness Retreat, 1 Oven Grand Street, Wilderness, 6560, Garden Route. **Telephone:** +27 (0)44 877-1420 **Opening hours:** Booking essential.

Palms has been one of the best restaurants in Wilderness for several years. Not only do the owners and staff of the Palms Wilderness pride themselves in their level of service and facilities but definitely also their restaurant. Here you will be treated to scrumptious dinners accompanied by South African Estate Wines from the temperature controlled cellar in a sublime atmosphere!



With a young and enthusiastic chef at the helm, dinners are definitely an event! The dinner menu changes daily! Fresh produce, beef, lamb, ostrich, game & fish – all sourced daily to ensure the highest standard and quality of each meal presented. Only one seating is hosted per night to ensure a relaxed atmosphere. Soft music, candles and a cracking fire in winter complete the picture!

DOUBLESHOT COFFEE BAR (PLETTENBERG BAY)

Address: Upper Level, The Square Lifestyle Centre, Main Road, Plettenberg Bay, Garden Route

Telephone: +27 (0)82 344-2661 **Opening hours:** Monday to Friday from 07h30 to 14h00.

Saturday from 08h00 to 13h00.

If you need to get your daily caffeine fix or can't begin your day without your flat white, cuppa joe or double tall

skinny cappuccino then this is the place for you. Doubleshot Coffee Bar is the place for all things coffee in Plettenberg Bay.



With the cool interior of the shop you'll feel instantly relaxed as you wait for your superb, steaming cup of coffee to be poured. Coffee is an art for owners Karin and Karin and their passion shines through at this fantastic spot. Next time you need a pick me up, pop past here and it will certainly make your day.

DRUMMING EXPERIENCE - FIND YOUR RHYTHM (KNYSNA)

Address: Venue dependant. **Telephone:** +27 (0)44 343-2598 or + 27 (0)73 060-0008 or + 27 (0)73 059-9907 **Opening hours:** By arrangement.

Find your rhythm to the beat of your own drum. Stomp your feet in 'rain boots' like a traditional African dancer and learn the Gumboot Dance. Create dynamic music by simple clapping in groups or boom-whacking on a brightly coloured plastic tube used in African music. These non-verbal communication experiences are social, therapeutic and a great deal of fun! African cultures throughout history have unified tribes through these universal musical languages which are tools today for group entertainment and team building. Drums to tap on and leadership to tap into are provided for the traditional African drum circle activity. Gumboots and professional wearers demonstrate African footwork to be mimicked. Boom whacker instruments and whackers of distinction whack up some serious beats.



No experience is expected and you'll be amazed at your progress in a single session where even the self-confessed cynic and so-called musically challenged individual explores self expression through unified rhythms. Communication is raised with call and a response pattern, buried rhythm is unleashed and individuals create group impact. These are interactive African celebrations which both children and the usually hard of hearing can find joy in. Hosted at a Drum Café venue any individual or group can add their beat or a private group celebration at your own venue can be arranged. Throw a 'Shebeen' (unofficial local liquor outlet) themed party and get the gang highly energised to the drums hums or sit back and enjoy a professional staged performance at a showcase production. Find your rhythm, lose yourself, and open your soul.

EASTERN HEAD CAFÉ (KNYSNA)

Address: 25 George Rex Drive, Eastern Head, Knysna, Garden Route **Telephone:** +27 (0)44 384-0933 **Opening hours:** Bookings advised.

Situated on the rocks of the famous Eastern Head in Knysna, Eastern Head Café offers one of the most exquisite views in Knysna, along with an unfussy café menu – exactly what you're looking for when you are on holiday in the Garden



Route. With its beach café feel and views over sparkling blue water, Eastern Café is a firm favourite along the Garden Route. Starting with a delicious cappuccino, we took a look at the variety of cooked breakfasts on offer. With names such as low tide, neap tide and spring tide, you won't forget where you are! Breakfasts come jam-packed with extra touches, such as pork sausages and burger patties, for the famished. As huge breakfast fans, we were gob-smacked by the liberal smatterings of salmon and hollandaise breakfasts, with unusual omelettes competing for the top spot. Moving into lunch, we had already done a little research and knew that the beer-battered fish with thick cut chips was a must-have. Other robust lunch options include grilled sirloin steak; deep-fried calamari; Prego roll and chips; grilled prawns and Cape Malay seafood curry. The salad menu once

again impressed us, with a wide selection of salads big enough to enjoy as a main meal, such as the Asian chicken, smoked salmon trout and chicken Caesar salads. The open sandwich and burger selection beg for return visits, as does the cocktail menu! Claiming to serve the best cocktails in Knysna, who could resist?

EDEN TO ADDO HIKE (KNYSNA TO ADDO)

Address: The hike starts in Knysna and ends in Addo.

Telephone: +27 (0)44 533-1623 **Opening hours:** At the moment, the hike is not yet formal, and happens only once a year in September. Contact for full details.

The Eden to Addo hike is considered by some as the longest, if not the toughest hiking trail in South Africa. Regarded as a 'mega' hike, the Eden to Addo entails an 18-day haul from Knysna to Addo and the Addo Elephant National Park, on its way to being one of the largest national parks in southern Africa. The 'eden' in the title no doubt suggests a 'lost' paradise; a play on what would once have been deep forests along the coast.



Inbetween the trail meanders through the Baviaanskloof wilderness and the many folds of the varied Cape mountain ranges – Tsitsikamma, Langkloof, Couga, Groot Winterhoek and Klein Winterhoek.

The hike is an endurance test that pays off because of the sheer beauty of the largely deserted surrounds. Gentle hills, mountains, valleys, folds that go on forever. Those who walk the hike marvel at the distinction between a coastal area under human pressure, and the incredible wilderness so close by, filled with biodiverse vegetation, blue skies and mountains and mountains. The effect of this wild beauty on those who do the hike is enormous. The hike starts in Kranshoek, one of Knysna's indigenous forests. From here it winds its way through three meg-reserves – The Garden Route National Park, the

Baviaanskloof Mega-Reserve and the Addo Elephant National Park. This corridor is known as the Eden to Addo Biodiversity Corridor, its aim to conserve endemic species.

The hike is made slightly easier, and possible, by the slackpack element – your luggage is transferred, your tent pitched and your meals prepared for you – but this by no means deters one from the average 26 km day. That's seven

mountains, six national parks and nature reserves and five biomes in total. At the moment, the hike is not yet formal, and happens only once a year in September.

Explore the Keurbooms River Reserve (Keurboomstrand)

Address: Keurbooms River Reserve, Keurboomstrand, near Plettenberg Bay, Garden Route

Telephone: +27 (0)21 659-3500 The beautiful Keurbooms River nature reserve that stretches over a distance of 2500 hectares, is bisected by the Keurbooms River and overlooks the estuary. Despite the fact that the estuary below the N2 bridge falls outside of the boundaries of the reserve, it remains one of the finest examples of a tidal river mouth the Garden Route has to offer.



The easily accessible Keurbooms River estuary gives no indication of the incredibly convoluted journey of the mother river, which winds its way downstream from its source in the Langkloof, north of the main Tsitsikamma Mountain range. It wends its way between mountain valleys providing a spectacular, unspoilt gorge within the reserve well worth visiting!

FISHING AT BOTLIERSKOP GAME RESERVE (LITTLE BRAK)

Address: Botlierskop Private Game Reserve, Botlierskop Farm, Little Brak River, Mossel Bay, Garden Route.

Telephone: +27 (0)44 696-6055 **Opening hours:** By arrangement.



Try your hand at fishing with an experienced guide or ask your guide to arrange a fishing rod and tackle. Species you are likely to catch are Carp, Large mouth Bas, Blue Kurper and Fresh water eels. Strictly Catch and release! For those who would prefer to relax, there is an informative river cruise where guests can savour the moment. Various bird species could be seen such as Blue Crane, Fish Eagle, Egyptian Geese and a wide variety of duck species and if you are really lucky you will see the Cape Clawless Otter feeding in the river.

GAME DRIVE AT PLETT GAME RESERVE (PLETTENBERG BAY)

Address: Plettenberg Bay Game Reserve, Garden Route

Telephone: +27 (0)44 535-0000 or +27 (0)84 792-8288 **Opening hours:** Booking essential - 2 hour game drives at these times: May to September at 11h00 and 15h00.

October to April at 08h30, 10h00, 11h00, 12h30, 15h00 and 16h00. Enjoy a 2 hour Game Drive at Plettenberg Bay Game Reserve. Plettenberg Bay Game Reserve, the Garden Route's largest wildlife reserve, offers exciting game viewing experiences for day visitors.



Join experienced and knowledgeable game rangers for a two-hour game drive in an open Land Rover so you can feel close to nature and enjoy the sensory experience of Africa. Expect to see any of the Big Four species on the Reserve - buffalo, lion, leopard and rhino - as well as numerous species of antelope, giraffe, zebra, hippo and crocodiles. If you are interested in birds and the smaller wildlife species which have made their home here, our rangers will gladly point out the indigenous reptiles, insects and vegetation and share their knowledge about them.

At the close of your game drive experience, you are welcome to enjoy a refreshing drink at the bar, while you recollect your experience. The game drives at Plettenberg Bay Game Reserve are open to the public but booking is advised to avoid disappointment. See departure times above.

GAME DRIVE IN THE GARDEN ROUTE (ALBERTINIA)

Address: Garden Route Game Lodge, N2, Albertinia, Garden Route

Telephone: +27 (0)28 735-1200 **Opening hours:** Open to day visitors from Monday to Sunday from 07h30am to



16h30. Game viewing drives last approximately 2½ hours. The Garden Route Game Lodge offers day visitors a chance to experience some of Africa's wildlife as they journey down the Garden Route. Here you can enjoy sightings of lion, rhino, giraffe, elephant and much more from the back of an open Landrover in this malaria free game reserve. Game viewing drives last approximately 2½ hours. Complete your day visit with a relaxing light lunch served around the pool or a refreshing drink from the bush bar..

GO GAMBLING AT THE GARDEN ROUTE CASINO (MOSSSEL BAY)

Address: 1 Pinnacle Point Road, Pinnacle Point, Mossel Bay, Garden Route. **Telephone:** +27 (0)44 606-7777 **Opening hours:** 24 hours a day, every day.



Garden Route Casino is now open 24 hours a day. Visitors are able to enjoy gaming facilities which include 412 slot machines, 16 gaming tables (including 3 poker tables), a Salon Prive, The Admirals' Buffet, a fast food area and a Cosmic Candy Sweet Shop.

For the children there is a game area and creche. Garden Route Casino forms part of the Pinnacle Point Estate and Golf Resort which is ranked as one of the top 10 new golf courses internationally.

GO SURFING IN STILL BAY (STILL BAY)

Address: Still Bay, Garden Route **Telephone:** Not applicable

Still Bay is famous as a surfing destination. The rocky Morris Point Cape above the Still Bay harbour is a the preferred spot for advanced surfers. On most of days the waves roll into the bay in high water-tunnels and then slowly wash out to shore. Some days dolphins and seals will join you in surfing the waves.



Even more spectacular is the rough coast of Jongestontain, where only the pros ride the waves. Amateurs will prefer the softer breakers of Lappiesbaai.

GOURITS BRIDGE BUNGEE JUMP (GOURITSMOND)



Address: Gourits Bridge, Gouritsmond, Garden Route **Telephone:** +27 (0)44 697-7001 **Opening hours:** Please enquire.

This is the original African Bungy jump site – established in 1989 and still going strong. At 65 meters above the Gourits River, this bungy jump offers a big ground rush and plenty of adrenalin.

35 Kilometers to the west of Mossel Bay along the N2 national road is the historical Gourits River Bridge. This is where Bungy jumping began in South Africa. The Gourits River Bridge is 65m high, and is the longest running bungy site in Africa.

HARKERVILLE SATURDAY MARKET (PLETTENBERG BAY)

Address: On the N2, between Knysna and Plettenberg Bay, Garden Route

Telephone: + 27 (0)44 533-9094 **Opening hours:** Saturday mornings from 08h00 to 12h00.

On the N2, between Knysna and Plettenberg Bay, the Harkerville Market has been going for 10 years now and is a market with a difference; not a flea market, not a craft market, not completely a farmers market but perhaps a bit of the best of all three.



A wonderful way to spend a Saturday morning whether browsing for books and flowers or perhaps purchasing a bag full of delicious locally produced cheeses, fresh mushrooms, delicious pies, organic veges and homemade bread. Breakfast is also served under the trees so arrange to meet friends and family under the oaks for a Saturday morning catch up! There is ample parking available. The market is on from 8am until midday, every Saturday.

HARRY B'S (KNYSNA)

Address: 2 Main Street, Knysna, Garden Route **Telephone:** +27 (0)44 382-5056 **Opening hours:** Please enquire. Based in an old Victorian house dating back to 1862, Harry B's was originally built for the Thesen family, boasting fittings and finishes that will transport you instantly to another time.



An up-market establishment, Harry B's boasts a Diners Club award-winning winelist, whiskeys, cognacs and a selection of cigars to round off your memorable meal in style.

HARTENBOS WATERPARK (HARTENBOS)

Address: Corner Kaap de Goede Hoop Ave and Port Natal Way, Hartenbos, Garden Route

Telephone: +27 (0)44 695-2083 **Opening hours:** Monday to Thursday from 09h 00 to 16h00.

Friday and Saturday from 09h00 to 17h00. Sunday from 10h00 to 16h00.

On the corner of Kaap de Goede Hoop Ave and Port Natal Way in Hartenbos, you will find Hartenbos Waterpark, offering the biggest variety of water slides in the Western Cape.

Come spend the day with us while enjoying our exhilarating new rides. Fun for all ages, from toddlers to Grandpa and Grandma! Not limited to birthday parties, school and church outings. Next to amusement park and miniature golf course.



HEAL YOURSELF AT THE HOUSE OF ALOES (ALBERTINIA)

Address: 39 Industrial Rd, Albertinia, Garden Route **Telephone:** +27 (0)28 735 1454 **Opening hours:** Open daily, please call to confirm.

In the plant kingdom there is one superhero. A hero so legendary that its powers reach far back into African ancestry. A hero with so much magic that it can heal the sick; soothe the burnt, disinfect the compromised, deflake the bitten, rejuvenate the weary and ease the wounded. A therapeutic warrior that protects South African tribes and was absorbed as a symbol of wellness on the cave walls that formed the rock records of the Khoi and San.

A hero who nurses Zulu cattle, washes the Pondo people and detoxifies the Xhosa culture. A respected ally of



medicine men from a time when medicine was generated from the earth and prescribed by the wise. A hero that flourishes in nature's hardest conditions and stands proud on a strong spine 3 metres high under the the African sun. A hero that is indigenous to South African soil and curative to global symptoms. A hero that wears red rosettes in place of a red cape and is known in powerful circles as A. Ferox; Aloe Ferox. House of Aloes reveals the secrets of this fleshy flower that is recognised as an endangered plant.

Buy a seedling plant to take home and nurture or nurture yourself with a stroll amidst the garden of 17 Aloe species. Explore the factory where the Aloe Ferox's yellow bitter sap is used as a digestive aid and its white gel is used for nutrition

and longevity. Pamper yourself with a cosmetic treatment at the salon; watch a traditional healing demonstration and leave through the Garden Route a little younger and a little wiser.

HET VIJFDE SEISOEN (GEORGE)

Address: 3 Maitland Street, Blanco, George, (Off Montagu Road), Garden Route. **Telephone:** +27 (0) 44 870-7320

Opening hours: Please enquire.

Het Vijfde Seisoen is a fine-dining restaurant with Belgian twist, situated in Blanco, George. Beautiful views, expansive gardens and terrace dining add to the sumptuous atmosphere at this upmarket establishment.



Overwhelm your taste buds with a selection of delectable starters, including lobster soup ; frog legs in garlic sauce; real North Sea (Belgian Grey) shrimp cocktail ; Brabants, Asparagus; Foie Gras or triple Belgian paté toast with onion confit. Mains are equally as luxurious, starting with the duck a l'orange; rabbit 'the Flemish way' with Belgian Beer ; leg of lamb in mustard marinade; triple venison sensation (Ostrich – Springbok – Venison) served with forest (Belgian) mushrooms.

Sole is the introduction to the seafood menu, while Flemish mussels sound mouth-watering. Le Vraie Bouillabèse de Marseille is perfect dish for winter, while the giant lobster with garlic-lemon butter competes as a signature dish.

Rounding off, the dessert menu is somewhat petite, offering homemade tiramisu; real Flemish 'rijstepap met bruine suiker'; chocolate mousse and sabayon Francaise, amongst others.

HIKE THE DOLPHIN TRAIL (TSITSIKAMMA)

Address: Start at Tsitsikamma National Park and end at The Fernery at Forest Ferns. **Telephone:** +27 (0)42 280-3588

Opening hours: Booking essential.



For those hikers who know the rigours of the Otter Trail, and for those who have never had the luck or the courage to hike it, why not take a well earned break and come and enjoy the unrivalled beauty and luxury of the Dolphin Trail? For two magical days you can now hike the magnificent Tsitsikamma Coast with no heavy backpack, and spend three nights in comfort at different accommodation venues!

This unique trail has been made possible by the formation of a partnership between the Tsitsikamma National Park and two private sector partners,

namely Forest Ferns and Misty Mountain Reserve. The result is a hiking experience that will both challenge and pamper you. The trail covers a distance of 17 Km starting in the unrivalled beauty of the Tsitsikamma National Park at Storms River Mouth, and winds its way eastwards through natural fynbos and pristine indigenous forest, over rugged rocks at the waters edge, to end on the banks of the Sandrift River at The Fernery.

The package is fully inclusive and features the following : - all meals, from dinner on the day of arrival, to breakfast on the day of departure - the attendance of well trained local guides - a 4x4 drive through the old Storms River Pass - the transportation of all luggage by vehicle between overnight stops so that guests need hike only with a light pack containing a few personal items

Hikers have stunning views of the rugged Tsitsikamma coastline, and the chances of spotting whales, dolphins and the occasional otter are good. On route, many birds including the gorgeous Knysna Loerie can be heard and spotted while hiking through the forest, and the endangered Oystercatcher is often to be seen on the shoreline. Swimming and snorkeling in the rock pools is possible at the discretion of the guides.

HIKING IN THE ROBBERG NATURE RESERVE (PLETTENBERG BAY)

Address: Robberg Nature Reserve, Plettenberg Bay, Garden Route. **Telephone:** Not applicable **Opening hours:** Open daily from 07h00 to 17h00.



Robberg Nature Reserve is a charged booster of outdoor living - incredible scenery, views over shoreline and sea, a thriving Cape fur seal colony, a huge diversity of bird life, and uniquely beautiful fynbos. You have access to three trails that range from 45 minutes to 5 hours and 11 kilometres in length - a moderately strenuous (most of it is flat, and relatively easy going) circular walk that leads one right to the Robberg point - not advisable with little ones or at high tide, however.

HIKING TRAILS IN STILL BAY (STILL BAY)

Address: Visit the Stilbaai Tourism office for directions. **Telephone:** +27 (0)28 754-2602 **Opening hours:** Any time, best during daylight hours.

A highlight of a visit to Still Bay (also known as Stilbaai) is the Noordkapper Hiking trail which follows the coastline to Jongensfontein, one of the two villages (the other is Melkhoutfontein) just outside Stilbaai, home to the descendants of the original fishermen of the area still involved in fishing and the building industry today.



Other hikes include:

- West Bank Route - an excellent trail for bird watching and fairly easy.
- Pauline Bohnen Route - an average hike with views of the ocean and dune fynbos.
- Lappiesbaai Beach Route - easy to tackle at low tide and great for whale watching in season

HORSEBACK SAFARI AT PLETT GAME RESERVE (PLETTENBERG BAY)



Address: Plettenberg Bay Game Reserve, Garden Route. **Telephone:** +27 (0)44 535-0000 or +27 (0)84 792-8288 **Opening hours:** Open to day visitors and scheduled daily at 10h00 and 15h00, weather permitting. Booking is essential. Horseback Safari at Plett Game Reserve

A memorable African experience is a horseback safari at Plettenberg Bay Game Reserve. There is no better way to view the game which, accustomed to

the presence of the horses, will allow them within very close range. On horseback you can go where vehicles have no access and are free to roam with the game or track them down. Feel the grass and bush brush past you, breathe in the fresh air around you and listen to the sounds of Africa.

On the two-hour horse safari guests are accompanied by an experienced and knowledgeable game ranger, keen to share his insight with you. The horses are well-schooled and friendly and will provide a comfortable, easy ride for even the most inexperienced riders. After the safari, relax at the bar with a drink and share your experiences.

ÎLE DE PAIN (KNYSNA)

Address: Thesen's Island Street, Knysna Waterfront, Knysna, Garden Route.

Telephone: +27 (0)44 302-5707 **Opening hours:** Please enquire.

At île de pain Bakery and Café, bread is a religion. Bread is worshipped. Bread is the reason why this passionate crew wakes up in the morning and toil over hot ovens all day. Their dedication to slow, uncomplicated-yet-beautiful food is the secret to their success as one of most popular eateries in Knysna.



Based at the exclusive Thesen Island in the Knysna Waterfront, île de pain offers an overall experience, pairing aesthetics, memorable food and a bustling atmosphere with the majestic

beauty of the Knysna waterfront. île de pain was the first artisan, wood-fired oven bakery in South Africa, reviving a tradition that started in Africa, around 7000 years ago. The baker uses time to bring out the best of the natural ingredients, though slow fermentation and long rising. Only the best ingredients are used at the café - another factor in its success.

Delectable pastries sit alongside simple breakfasts on the menu, from baked pear tartlets to the multi-layered coconut dacquoise. The lunch menu is inspired by the availability of fresh, local ingredients, including healthy gourmet salads, roast chicken parcels, slow-roasted tomato and ricotta tarts, and their signature beef burger, served with wild mushrooms and parmesan shavings.

Regular patrons needn't be encouraged to grab massive rounds of bread – rumour is, they last for up to 2 weeks, yielding enough bread for a sea of scrummy sandwiches.

INTERACT WITH ELEPHANTS (PLETTENBERG BAY)

Address: The Craggs, 6602, Plettenberg Bay, Garden Route. **Telephone:** +27 (0)44 534-8145 **Opening hours:** Please enquire.

Directly adjacent to Monkeyland and the Birds of Eden sanctuaries in Plettenberg Bay, The Elephant Sanctuary hosts a unique and fully guided educational program that sets itself apart from anything else that South Africa has on offer in terms of elephant interaction. Guest numbers are strictly limited to ensure personal attention and maximum

elephant interaction for each guest, making this memorable and enriching experience.



Visitors can learn more about elephant habits, behaviour, different personalities and anatomy through up-close and personal interaction. You get an opportunity to touch, feed and even walk trunk-in-hand with these magnificent animals.

The Elephant Sanctuary provides a "halfway house" for young African elephants in need of a temporary home. It is the only operation in South Africa that provides for elephants in this way. Elephants are released into an environment where they can be more independent once they are older and

no longer require the special care.

Notes: The venue, including the bathrooms, is wheelchair friendly and there are wheelchairs available for guests' use. Visit the well-stocked curio shop which offers free tea, coffee, water and juice to all guests and a kiddies play area.

JAZZBURY'S RESTAURANT (MOSSSEL BAY)

Address: 11 Marsh Street, Mossel Bay, 6500 , Garden Route. **Telephone:** +27 (0)44 691-1923 or +27 (0)72 115-9944

Opening hours: Please enquire.

Boasting traditional South African cuisine, with the warmth of jazz wafting through, Jazzbury's has fast become an institution in Mossel Bay. With an emphasis on ostrich as an ingredient, the menu also positively groans with delicious delicacies and traditional dishes. Start with something to ignite your tastebuds, before venturing towards the main menu selection.



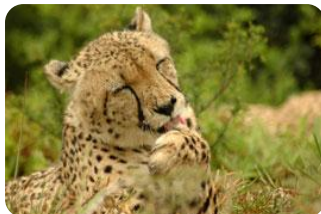
A feast of hearty, rib-sticking dishes awaits, with a choice of potjies, stews, bredies, and meat from the grill, often accompanied by mielie-meal, sweet potato and sweet corn. The Karoo lamb shank stands out as a firm favourite, but for those with a love of seafood, the fresh seafood selection will more than satisfy any cravings. Dessert is delightful, with a selection of firm South African favourites, including Malva pudding, served warm with ice-cream.

JUKANI WILDLIFE RANCH & CARE CENTRE (MOSSSEL BAY)

Address: Jukani Wildlife Ranch & Care Centre, Just outside Mossel Bay, Garden Route.

Telephone: +27 (0)44 698-2004 **Opening hours:** Contact us for times.

Jukani Wildlife Sanctuary is home to the big cats such as lions, cheetahs, Bengal tigers, leopard (spotted and black), jaguar, pumas, caracal and serval cats and other wildlife species. Jukani Wildlife Sanctuary is the only facility of its kind on the Garden Route and guarantees an experience of a lifetime to our guest. We believe in a personal approach to guests and an informative tour of the facility is part of your entrance fee.



Jukani Wildlife Sanctuary is not a zoo but rather a wildlife park where our feline and after wildlife family live in large enclosures designed to give our animals the freedom to run, play and exercise. Each enclosure was designed for a specific species with regard to enrichment and husbandry. A tree trunk weighing more than 19 tons was transported from George to the facility specifically for our Leopard enclosure. The reasoning "The Leopards must have a big tree to play in." Each enclosure was carefully designed to ensure the highest quality of life for our feline family. We have

as a special and personal relationship with all our animals and visitors are given the opportunity to experience these magnificent animals up close and personal.

At Jukani Wildlife sanctuary we are very conscious of conservation and guests are treated to informative discussions on the various species and their ecological place in nature. We will share our knowledge with you on an informal basis and enjoy discussions on our favourite topic, Big Cats. We now boast a curio and kiosk for items unique to Jukani Wildlife Sanctuary and food for the hungry.

KAFE SEREFÉ (GEORGE)

Address: 60 Courtenay Street, George, Garden Route. **Telephone:** +27 (0)44 884-1012

Situated at 60 Courtenay Street in George, Kafe Serefé offers delicious food with touches of Turkish traditions. On the menu are delicious South African Steaks, Pork and Lamb dishes as well as the traditional Turkish cuisine, delicious coffee and decadent desserts.



Kafe Serefé meaning Cheers! or Good Health! has a cozy and relaxing atmosphere with belly dancing on Wednesdays and Fridays and it has a fully equipped smoking room with hubbly bubbly pipes. It is an ideal night out as it offers great value for money, fantastic food and live magical entertainment making Kafe Serefé an altogether fabulous dining experience!

KEURBOOMS RIVER FERRY (KEURBOOMSTRAND)

Address: The Keurbooms River Ferries depart 6km from Plettenberg Bay, travelling towards Port Elizabeth on the N2. Directly as you cross the Keurbooms River Bridge you will turn to the left at the sign, "Ferries". The road will bring you back under the bridge into the parking area.

Telephone: +27 (0)44 532-7876 **Opening hours:** Morning Trips at 11h00 - Duration 2.5 hrs
Afternoon Trips at 14h00 - Duration 2.5 hrs



Sundowner Trips at 17h00 - Duration 2.5 hrs

Explore the Keurbooms River Nature Reserve in the comfort of one of our 30 seater crafts. Relax and enjoy as we guide you through the history of this incredible area. Once our 5km destination has been reached we stop on a natural formed river beach, where you are able to explore the forest up close by strolling through pristine canopies of towering yellowwoods and other indigenous trees.

You are able to picnic, swim or just relax on the river beach before our return to civilization. Drinks are available on board and picnic baskets require a 24 hour notice period. We cater for river lunches, beach picnic, team building, group outings which can all be arranged on request.

KITESURFING IN THE GARDEN OF EDEN (SEDFIELD)

Address: Elemental Sport, Opposite the Lake Pleasant turn-off, Sedgfield, Garden Route. **Telephone:** +27 (0)44 343-3118 **Opening hours:** By arrangement.



The lakes, estuaries and pristine beaches of our area offer kiting opportunities as diverse as anywhere in the world and is suitable for beginners through to expert kites.

At Elemental Sport we offer introductory lessons, equipment sales and advice on local spots and conditions. NAISH kitesurfing products provide world class gear for tuition and also for new and second hand equipment sales

KNYSNA FRIDAY SUNDOWNER CRUISE (KNYSNA)

Address: Thesen Island Harbour, Knysna, Garden Route **Telephone:** +27 (0)82 892 -0469 **Opening hours:** Cruises depart at 16h30 and 17h30 every Friday.

If you are in the Garden Route town of Knysna on a Friday then why not book on a Sundowner Cruise? After a long week a cruise out to the well known Knysna Heads will be just what you need to get your weekend off to a great start!



The tour includes two drinks and light snacks are served. Fresh oysters are also available should you want some. If you can get ten friends together, the boat can be booked exclusively for the duration of the hour long cruise.

KNYSNA HEADS OYSTER EXPERIENCE (KNYSNA)

Address: Tours depart from Thesen Island Harbour, Knysna. **Telephone:** +27 (0)82 892 -0469 **Opening hours:** Tours depart at 10h00 daily.

Learn a bit about Knysna from the water! The Knysna Heads Oyster Experience involves a cruise from Thesen Island Harbour and out over the main lagoon to the Knysna Heads. The heads, although impressive are dangerous to pass through and therefore make Knysna one of the most dangerous ports in the world! The guide on board the boat will point out various places of interest and pass on information about the Knysna Lagoon.



The tour includes light snacks and drinks and these will be enjoyed on the water while enjoying the view of the Heads. After this the cruise returns to harbour via the Knysna Waterfront.

KNYSNA SUNSET CRUISE (KNYSNA)

Address: Thesen Island Harbour, Knysna, Garden Route **Telephone:** +27 (0)82 892-0469 **Opening hours:** Cruises depart at 17h00 in summer and 16h30 in winter and last two hours.

The Knysna Sunset Cruise is a unique combination of the Knysna Heads Tour, the Oyster Farm Tour as well as a cruise on the stunning Knysna Lagoon. Included is a guided tour of the oyster beds (where you can get to know and taste the difference between wild and cultivated oysters) and the rest of the lagoon as the sun sets. A bit of a history lesson is on the cards as your guide will give you information on the Knysna Heads, the wreck of the Paquita and some local Knysna history! The cruise includes a delicious snack platter as well as drinks and three oysters per person (additional oysters are on sale too). What an absolutely perfect way to spend a few hours - sipping wine, supping oysters and enjoying the magnificent Knysna sunset.



KURLAND FOOD MARKET (PLETTENBERG BAY)

Address: The Mill, The Crag, on the Monkeyland Road. in Plettenberg Bay, Garden Route

Telephone: +27 (0)84 812-3365 **Opening hours:** Sundays from 09h00 to 14h00.

Located at The Mill in The Crag, the Kurland Food Market offers farm-fresh wholesome foods, crafts and a wonderful day out for the whole family. With plenty of healthy food and fantastic offerings for vegetarians, the Kurland Market also boasts such delights as indulgent cakes and pastries; truffles; raw chocolate; creamy cheeses; Gluwein; artisanal breads and every preserve variety you could possibly desire. It's the perfect place to do your grocery shopping, especially if you prefer to buy your vegetables from the source.



To add to your shopping basket, there are also gift, craft, alternative therapy and clothing stalls, perfect for Christmas time or for those who prefer to support the community when buying gifts.

A recycling project, special interest lectures and animal edu-activities are soon to be introduced, adding to the abundance of activities for old and young. The market owners, Cindy & David Lederle, are committed to

making the market a community project and are encouraging people in The Crag area to join in various capacities as stall holders, stall managers and entertainers.

LA LOCANDA (GEORGE)

Address: 124-a York Street, George, Garden Route **Telephone:** +27 (0)44 874-7803 **Opening hours:** Please enquire - bookings recommended.

The first thing that any lover of Italian cuisine will know, is that La Locanda is owned and run by Italians! A feast of antipasti, insalate and zuppe, primi and secondi awaits you at this family run Italian restaurant.



Starters range from Antipasto misto la locanda (Italian cold meat platter), to gourmet prawns wrapped in lardo; Carpaccio; insalata Caprese and Parmigiano cheese baked inside frilled aubergine slices.

Insalata & Zuppa opens with the most delectable sounding salads on earth – ripe tomatoes tossed with cucumber, onion and peppers, dressed with olive oil and oregano, served with brushetta. For Primi, or main, pasta reigns supreme. Spaghetti is stirred with bacon and eggs in the authentic carbonara dish; gnocci is served with a Gorgonzola sauce and spaghetti is tossed with prawns, mussels, calamari and a hint

of pesto in the spaghetti allo scoglio dish. Pan-friend fillet is served with mustard sauce; veal escallops are served on mash; pork neck is cooked in a creamy mushroom sauce and served with roast potato. The Gamberoni flambé includes seven large prawns cooked in lemon butter and flambéed in brandy.

The pizza menu is something to behold with toppings like Gorgonzola and Parma ham dominating. Finish off your meal with Italian dessert and an espresso, the true Italian way.

LAWNWOOD SNAKE SANCTUARY (PLETTENBERG BAY)

Address: N2, The Crag, Plettenberg Bay, Garden Route. **Telephone:** +27 (0)44 534-8056 **Opening hours:** Tuesday to Saturday from 10h00 to 16h00.

The Lawnwood Snake Sanctuary is located in the Crag, 18km east of Plettenberg Bay. A one hour guided tour is available and this takes in an indigenous snake pit, a boomslang exhibit, a monitor lizard enclosure, a large dome housing South African and exotic snakes and a giant python room.



Also included in the tour is how to respond to an unexpected encounter with local snakes. The sanctuary is only open during the summer months as snakes hibernate during the winter.

LE FOURNIL DE PLETT (PLETTENBERG BAY)

Address: Lookout Centre, The Courtyard, corner of Main and Church Street, Plettenberg Bay, Garden Route.

Telephone: +27(0)44 533-1390 **Opening hours:** Please enquire

Le Fournil de Plett, Bakery and Café is housed in a sweet little nook in the Lookout Centre Courtyard. Famous for their variety of slow-risen artisan breads, baked daily using stone-ground flour, Le Fournil also offers plenty of other scrumptious goodies on their French influenced menu.

South African breakfast favourites are served with the Le Fournil flair, from their Tartine English breakfast, to their Croissant Croque, Le Chocolat Chaud – and the most delicious croissants. You'll have a hard time deciding whether to order the petit pain au chocolat, croissant aux amandes or the croissant au beurre – so we suggest you order them all, and take the any remaining pastries home!



Escaping the usual suspects, Le Fournil delights with their scrummy sandwiches, including the chicken tandoori; smoked salmon with cream cheese; roast beef and wholegrain mustard or roasted aubergine and courgettes with sundried tomatoes, pecorino and rocket.

Light lunch options include peri-peri chicken liver salad; haloumi niçoise and the lip-smacking grilled sirloin steak, served with roasted veg and polenta. The tartines are a treat, including roast beef, cheese; salmon and vegetarian options, and for those with more of an appetite, the calamari tempura; fish and chips; prego roll and the vol-au-vent should satisfy any cravings. Round off the experience with lemon tart or chocolate fondant with coffee, and relax.

LOOKOUT ART GALLERY (PLETTENBERG BAY)

Address: Lookout Centre, Main Road, Plettenberg Bay, Garden Route. **Telephone:** +27 (0)44 533-2210 **Opening hours:** Please enquire

Looking for a beautiful piece of South African art? Then stop off at the Lookout Art Gallery which has been in



Plettenberg Bay since 1974. You will find a collection of original artworks that is representative of the Southern Cape. Come and see some of the best contemporary South African art which include a variety of media - ceramics, sculpture, glasswork and paintings. Feel free to browse and if one or more of the paintings take your fancy you will be pleased to know that the gallery is able to pack and ship the works all over the world. Some of the artists housed at the gallery are Sue Kemp, Sam Nhlengethwa, Roelof Rossow, Ruth Squibb, Myfanwy Bekker and Paddy Starling to name but a few.

NGUNI RESTAURANT (PLETTENBERG BAY)

Address: 6 Crescent Street, Plettenberg Bay, Garden Route. **Telephone:** +27(0)44 533-6710 **Opening hours:** Please enquire

Nguni Restaurant is an atmospheric, dazzling venue, situated in front of The White House theatre, an original 100-



year-old building – one of the oldest in Plett. One look at the menu and you'll know that these gourmards know what they're doing in the kitchen!

Start with the South African influenced bobotie spring rolls, served with traditional homemade 'blatjang' (chutney), or the smoked salmon Carpaccio, served with caper berries, rocket and Huguenot shavings. The potted chicken parfaits, served with kumquat preserve sounds out-of-this-world, with the local home-cured bacon and spinach salad, topped with toasted almonds and onion marmalade, chasing at its heels.

For mains, the 350g Nguni Steak, served with potato bake and steamed greens, with an option of mustard or green peppercorn sauce, sounds like their pièce de résistance. More delicious options on the menu include the braised chicken, leek and mushroom pot, topped with crisp phyllo and the game sausage, served with caramelized onions and mashed potato; lamb bunny chow; linefish; seafood soup and linguine.

NOAH'S PARK WOLF SANCTUARY (PLETTENBERG BAY)

Address: Noah's Park Wolf Sanctuary, N2, Harkerville, Plettenberg Bay, Garden Route. **Telephone:** +27 (0)82 938-4821 **Opening hours:** Please enquire.

Noah's Park & Wolf Sanctuary offers a fun-filled outing for the whole family at affordable prices. The diverse collection of wildlife and farmyard animals will fascinate both children and adults alike. Make eye-contact with a wolf



and begin to understand the awesome nature of this magnificent animal. Marvel at the beautifully unique coat pattern of the African Wild Dog, a true palette of African earth. Appreciate the wily ways and incredible intelligence of the Black Backed jackal. Interact with the farmyard animals and discover animal affection.

- Light meals and refreshments available.
- Comprehensive info boards at all carnivore camps.
- Wheelchair / Senior Citizen friendly - all areas easily accessible.
- Children to be supervised at all times near the animals.
- No guided tours, no time limit, spend the day if you like.
- School trips are welcomed.
- Annual permits available, visit as often as you like.
- Park and

camps maintained daily.

- Carnivore feeding times between 4.30 - 5.00pm. • Picnic areas / tables available.

OCEAN ENCOUNTERS (PLETTENBERG BAY)

Address: Ocean Adventures, Central Beach, Plettenberg Bay, Garden Route.

Telephone: +27 (0)44 533-4897 **Opening hours:** By Arrangement.

Our Ecological adventure leaves from Central Beach with an exciting beach launch and heads east past the bird sanctuary and Keurbooms beach to Arch Rock. Here we usually encounter Bottlenose and the rare Indo-Pacific Humpback Dolphins as well as some shark species. From Arch Rock we head into the middle of the Bay where pelagic seabirds are normally to be found some 7km from the shore. Out there our resident Bryde's whales may be seen, as well as Common Dolphins or Southern Right and Humpback whales during their season.



again on Central Beach.

We then traverse the Bay to the point of Robberg Peninsula and out to the Wild side, often seeing groups of whales and pods of dolphins. Cruising back along the inside of Robberg, we see the unique geology from this unusual viewpoint and can observe our growing Cape Fur Seal Colony. Finally we head back along the Robberg beach, while a brief rundown on the history of the area is given. After passing the Beacon Island Hotel, built on the site of an original Whaling Station, we end the experienced with an exhilarating landing,

OLD NICK VILLAGE (PLETTENBERG BAY)

Address: National Road N2, Plettenberg Bay, South Africa **Telephone:** +27 (0)44 533-1395 **Opening hours:** Monday to Sunday.

Old Nick Village offers visitors a "creative lifestyle shopping experience" and is a landmark in this seaside town. Originally it was a Gansvlei General Dealers Store, a trading store, which was built by Aaron Toplis in 1880. The shop traded until the 1960's when it was forced to close due to the local population (and main customers) moved to the newly built New Horizon Township.



Today the village is a thriving centre which offers shops of all variety. The Old Nick Shop offers a selection of textiles and ceramics while the Red Barn offers a selection of delectable treats. Martie, a hand spinner, claims she is able to teach anyone aged from 2 to 102 how to hand spin, so why not stop past and see if she rises to the challenge? Otherwise visit the vibey, eclectic shops and galleries that find their home in the lush gardens of the Old Nick Village.

OUTENIQUA FARMER'S MARKET (GEORGE)

Address: George, Garden Route

Telephone: No telephone number supplied. **Opening hours:** Open every Saturday.

Home to 80 food and craft stalls, the Outeniqua Farmer's Market is hoping to put George back on the tourism map.

With food and lifestyle trends leaning towards organic food, provenance of food and handmade goods, the market offers a variety of farm fresh produce; artisan products; handmade goods; fruit; vegetables; dairy and cheese; biltong; speciality foods; gourmet meals and a plethora of food goods to pack into your basket for home.

The market offers:

- Beef products • Berries from various farms in the area • Biltong and biltong products • Breads



- Brownies • Cakes • Chocolate crafts • Cupcakes • Cut flowers and fynbos • Dried fruit • French breads
- Fresh fruit juices • Fruit and vegetables • Gourmet foods as featured at the World Culinary Fest
- Ice cream • Muesli • Nougat • Organic chicken and eggs • Over fifty cheeses • Pancakes • Pies
- Pizzas • Potato-based foods and snacks • Sauces • Separate nooks for coffee and breakfast
- Soft serve ice creams • Specialised foods, including vegetarian and seafood, as well as meat from a German vleischmeister • Tea from around the world (this is the one exception where the product was not sourced from the George area, but reflects the superb quality of the teas on sale)
- Traditional baked products (koeksisters, melktert, etc) • World cuisines, including Greek, Thai, Indian, Lebanese, Israeli and South African Yoghurt

The Outeniqua Farmer's Market is designed for convenience and entertainment in mind. There is parking for over 1200 vehicles, with entertainment happening in every nook and cranny of the market, perfect for the whole family. Be wowed by comedians, singers, bands and other entertainers while you shop and relax. With tons of undercover space, the market is open in all weather conditions. Children can take part in activities and dogs are even welcome!

OUTENIQUA HIKING TRAIL (GEORGE TO PLETTENBERG BAY)

Address: 1-7 days long, depending, 108 kms altogether **Telephone:** SA Parks: +27(0)44 302-5606 **Opening hours:** Best time to go: all year round

Set in the gorgeous Garden Route, this one of the most popular hikes, and one of the oldest. A seven-day trail in its entirety it starts at Beervlei Hut, an old forest station, and finishes at Harkerville hut near another forestry station. Despite the fact that the trails can only be done from west to east, you can make it shorter by doing it in 2, 3, or 4 day installments. The hike wends its way through ancient indigenous forests with incredible tree ferns and mountain scenery. It is a self-hike, well signposted, with accommodation in huts along the way. The hike is peppered with the call of birds, sightings of the legendary Knysna loerie, rivers, streams, and towering yellowwoods, stinkwoods, ironwoods, white pears, beech trees and the occasional vervet monkey.



Outeniqua Transport Museum (George)

Address: 2 Mission Street, George, Garden Route.

Telephone: +27 (0)44 801-8288 **Opening hours:** 1 September to 30 April (Summer season): Daily excluding Sundays from 08h00 to 17h00. 1 May to 31 August (Off season): Monday to Friday from 08h00 to 16h00 and on Saturday from 08h00 to 14h00. (Closed on Sundays).



Visit the Outeniqua Transport Museum to view a variety of steam locomotives including a narrow gauge, the Emil Kessler (Johannesburg's first steam locomotive), the impressive GL Garrett together with carriages such as a coach from the Royal Train of 1947, Paul Kruger's coach and private saloons. Various models of steam locomotives, a brilliant collection of steam locomotive number plates, makers plates, a model train room, road motor vehicles and a private vintage car selection complete the impressive display.

OYSTER FARM TOUR (KNYSNA)

Address: Tours depart from Thesen Island Harbour, Knysna. **Telephone:** +27 (0)82 892-0469 **Opening hours:** Tours depart at 11h00, 13h00 and 15h00 daily and last 90 minutes.



This is an ideal cruise for anyone who not only loves oysters but is also interested in learning about the Knysna Oyster, the wild oysters that grow along this stretch of our coastline and the oyster trade. The tour starts off towards the Knysna Heads where a guide will tell you, in an interactive experience, all you need to know about the oyster beds. The tour includes drinks, light snacks and three oysters per person (additional oysters are for

sale) so you will get to taste both wild and farmed oysters. Also thrown in is a history lesson on the Knysna Heads.

O'PESCADOR RESTAURANT (KNYSNA)

Address: Brenton Road, Belvidere, Knysna, 6571, Garden Route

Telephone: +27 (0)44 386-0036 **Opening hours:** Please enquire - Bookings recommended.

I've been brought up to seek out those little Italian Trattorias and Portuguese Tavernas in side alleys, in unremarkable places and in unlikely locations, and have stumbled on food so good that I have never forgotten the experiences. O'Pescador is one of those places.

With the skilled help of Mozambican chef Elias, who trained at the well-known Polana Hotel, O'Pescador delivers a Portuguese feast – and it has stood the test of time. Glancing at the starter menu, my eye finds the Plate No 1,



consisting of Calamari, Prego, Trenchado and Chicken Livers.

Or the Plate No 2: with baby prawns, mussels and chourico – perfect for the whole table. Possibly one of the most exciting aspects of eating Portuguese style is to try many tapas style dishes, with flavours that burst in your mouth. Starters can be enjoyed alone, with tempting Prego trenchado and sardines appealing to our taste buds.

Portuguese cooking places an emphasis in seafood dishes, and O'Pescador delights with its offerings, starting with fresh fish dishes, from calamari tubes, to trout and kingklip. We were incredibly impressed with the option of crab curry, one of the restaurants signature dishes, consisting of a crab still in its shell and served in a coconut curry sauce. Yum! Prawns can be enjoyed in the

traditional style (eaten with fingers, with smatterings of garlicky butter) or in a curry.

Meat dishes include the Portuguese steak, the Pescador steak, espetada, Prego trinchado and various steak cuts. They all sound mind-blowingly delicious!

PARAGLIDE WITH CLODBASE PARAGLIDING (WILDERNESS)

Address: Based in Wilderness, there are 24 flying sites within an hour's drive.

Telephone: +27 (0)44 877-1414 or +27 (0)82 777-8474 **Opening hours:** By arrangement

Jan Minnaar and Khobi Bowden apply their extensive local and international knowledge to enable you to fulfill your dreams in this on-going skill development sport.



Cloudbase Paragliding offer paragliding tuition, license courses, powered paragliding tuition, tours, and equipment sales and rental.

Based in the Garden Route town of Wilderness on the East Coast of South Africa. There are 24 flying sites within an hour's drive. These range from easy coastal soaring to cross country thermals.

PEMBREYS RESTAURANT (KNYSNA)

Address: Brenton Road, Belvedere, Knysna, Garden Route. **Telephone:** +27 (0)44 386-0005 **Opening hours:**

Wednesday to Sunday from 18h30 onwards. Lunch Sundays only.

Closed Monday and Tuesday, except in high season.



Pembreys is one of those fantastic restaurants where the menu is created by a passionate trained chef / owner, with overtones of European influences, with the richness of classic French cuisine - and a massive emphasis on taste and sauces. The menu changes daily, inspired by fresh local produce and what they have growing in

their garden, including beautiful fresh herbs.

A glance at one of their sample menu reveals a carefully orchestrated celebration of all these influences, starting with the antipasti buffet, which includes delights such as: griddled asparagus, pan-fried baby calamari, prawns, lime and fennel duck parfait, toasted lamb's brains and caper and herb flower butter spicy meatballs.

The brilliant touch of serving fresh pasta, made daily, makes our mouths water. Tagliatelle and ravioli are served with a variety of toppings, including mushroom and walnut sauce. Main courses shine with all the magnificence of a top notch restaurant menu. Grilled sole, roast duck leg confit, braised oxtail, slow-roasted Karoo lamb shank and grilled sirloin steak with café de Paris butter, all make us weak in the knees!

Rumoured to have some of the best desserts around, Pembreys wows us with their strawberry Eton mess (which we have never seen on a South African menu before), chocolate mousse cake, Amarula Crème Brulee and selection of sorbets.

Address: Red Berry Farm, Geelhoutboom, Blanco, George, Garden Route.

Telephone: +27 (0)44 870-7123 **Opening hours:** 9:00am - 4:00pm (open on Public Holidays except Christmas Day and Good Friday). We are closed on Sundays ... as all farmers need some family time and rest!



Pick your own strawberries at Red Berry Farm in George! You can pick strawberries, eat them, drink them all day long, while enjoying the wonderful and playful atmosphere of the Tea Garden where so many exciting group tours, birthday parties and sit down lunches and teas are enjoyed.

The Red Berry Farm is situated just outside George on the road going towards Blanco. The farm lies in a spectacular setting with views of the majestic Outeniqua Mountains.

PICNIC AMONGST THE ELEPHANTS (LITTLE BRAK)

Address: Botlierskop Private Game Reserve, Botlierskop Farm, Little Brak River, Mossel Bay, Garden Route.

Telephone: +27 (0)44 696-6055 **Opening hours:** By arrangement.



Enjoy a picnic in tranquil settings and relax amongst these extraordinary Elephants. A variety of snacks and sparkling wine is served and after this feast you can feed the Elephants.

Touch and feed Sam, Tsotsi and little Tsimba and get first hand experience of the African Elephant. And try an Elephant -back ride - Experience the real African thrill on elephant back – a unique first for the Garden Route.

PLETT FISHING CHARTERS (PLETTENBERG BAY)

Address: Plettenberg Bay, Garden Route **Telephone:** +27 (0)83 324-6331 **Opening hours:** By arrangement.

After the big one that got away? Look no further than Plett Fishing Charters. They offer game fishing between the months of November to June, shark fishing from September to June and traditional bottom fishing.



Equipment such as rod, reel, tackle and bait is supplied but you will need to supply a valid fishing permit (available at the post office) and don't forget your hat, sun block and warm jacket. Children must be over the age of seven.

PLETT MARKET ON MAIN (PLETTENBERG BAY)

Address: Main Street, Plettenberg Bay, Garden Route.

Telephone: +27 (0)44 533-1630 **Opening hours:** Monday to Tuesday and Thursday from 08h00 to 19h00. Wednesday and Friday from 08h00 to 22h00. Saturday from 08h00 to 20h00. Sunday from 08h00 to 15h00.



The Plett Market on Main is a great way to meet locals and enjoy the vibe that makes Plett so special. The market is open daily and has 7 food stalls which offer a huge variety of food to please any hungry tummy.

But food is not the only thing you will find here, browse through the traders stalls which include leather and skins, antiques, good second hand clothing, jewellery, African art, gifts, books and hats.

On Wednesday and Fridays join in the fun with the live music which begins at 18h00 and runs until 21h00, you are welcome to bring your own beverages. So bring your friends and make a night of it.

PLETT PUZZLE PARK (PLETTENBERG BAY)

Address: Oakhill Farm, Off N2, The Craggs, Plettenberg Bay **Telephone:** +27 (0)44 534-8853 **Opening hours:** Open daily from 09h00 to 17h00 except Mondays. Closed on Christmas day and easter Sunday.

Plettenberg Bay has a fabulous and unique attraction, the Plett Puzzle Park. It features the first amazing life size 3-D Maze in South Africa, as well as an exciting Forest Puzzle Walk which meanders through the natural forest, and a fun Rope Maze for the kids.



This is a place for visitors of all ages to exercise their bodies and minds in an entertaining, educational and affordable way - no more boring days when not on the beach! Light refreshments are available in a lovely garden setting, and the Puzzle Gift Shop has games and puzzles for all ages. Don't forget to wear comfortable shoes and bring a hat! Plett Puzzle Park is situated on Oakhill Farm, where local owners Colin and Wilane McLeod have lived since 1983. All attractions and games have been researched and created by Colin, and the 3-D maze is a brand new and unique design. Over time they aim to build more fun, intriguing and educational attractions at Plett Puzzle Park while creating sustainable local employment.

POMODORO RESTAURANT (WILDERNESS)

Address: Corner of George and Leila Lane, Wilderness, Garden Route. **Telephone:** +27 (0)44 877-1403 **Opening hours:** Open for breakfast, lunch and dinner seven days a week from 07h30 to 23h30.

Pomodoro is the place where locals and tourists meet and become friends, the place where true Italian hospitality and lively atmosphere makes you feel right at home. Pomodoro is a charming family tratoria in the heart of the Wilderness Village. It is the meeting place of the locals and you will always find it buzzing with activity. The outside terraces offer a front row seat of the village activities which, together with the laid-back atmosphere and great food, makes it the perfect place to while away the hours. Claudio (Italian) and Werner (chef) will warmly welcome you to this restaurant which they have worked so hard to make the best in the Wilderness. Pomodoro Restaurant is very serious about the quality of the food they serve. The pizzas are possibly the best on the Garden Route and the fabulous salads, antipasto, pastas, grills and seafood never fail to satisfy.



PRÊT-À-POT (PLETTENBERG BAY)

Address: Old Nick Village, N2, Plettenberg Bay, Garden Route **Telephone:** +27 (0)44 533-4100 **Opening hours:** Open daily. Go shopping at Prêt-à-Pot

Prêt-à-Pot is the place to find the perfect focal point to your room. If you are looking for something unique and



beautiful to accentuate your home this is the place to shop. The artists are inspired by everyday shapes in the environment and continue to bring exciting design into the mix.

Come and find a large range of items from candleware, water features and table tops to fabrics enamelware and glassware. Find a special item to take home from your holiday in the Garden Route.

The items are all made in limited quantity by a professional and dedicated team of highly skilled individuals. Let Prêt-à-Pot capture your imagination and add a bit of life to your home.

QOLWENI COMMUNITY SETTLEMENT (PLETTENBERG BAY)

Address: Qolweni Community Settlement, Plettenberg Bay, Garden Route. **Telephone:** +27 (0)44 533-5083 **Opening hours:** By arrangement. Please enquire Ocean Blue Adventures and the Qolweni Community Development Trust offer guests a unique experience through the heart of the Qolweni Community settlement surrounded by



breathtaking views of the Tsitsikamma Mountains.

Experience an African way of life by exploring the everyday life of a real African; with a guided tour you are able to explore interesting facts about the Xhosa history and Tribal culture. Meet the local children at the crèche and be entertained by their beautiful voices in song. See where the locals buy their everyday essentials while understanding the life of the local rasters as you tour their homes.

On request you can be entertained by the Umthombo Theatre Group performing traditional dances and listening to the exceptional choir singing their favorite songs.

QUAD BIKING IN THE GARDEN ROUTE (GEORGE)

Address: Quad Garden Route, Five minutes from George, Garden Route. **Telephone:** +27 (0)72 303-9011

Opening hours: By arrangement

Only five minutes from George in the Garden Route you can experience the thrill of driving your own quad through



beautiful scenery while having the adventure of a lifetime. Our Quad tours range from an introductory route through beautiful valleys with incredible vistas of the Garden Route to Overnight Adventure Expeditions where we camp in the wild and wind through narrow Mountain Passes. Some of our day-tours include riding on a quad to Oudtshoorn or enjoying the incredible Historical Montagu Pass Adventure Tour.

RELAX IN DANA BAY (DANA BAY)

Address: Dana Bay, Garden Route **Telephone:** Not applicable. **Opening hours:** Anytime!

In Dana Bay, some might say, there's not much to do, at all ... but if you follow my reasoning, adding your own



seasoning, I'll show you there is much to do in Dana Bay ...

Let's start with the first reason why this is the place to stay: once here, one is really able to r-e-l-a-x, all day! Yes, one may wish to take up one's camera and hat and happily hunt that exquisitely elusive flower for an hour, before returning from an active day to do that utmost important activity of Dana Bay which is to relax to the max! In Dana Bay, one may do whatever you wish, but always return to a wonderfully relaxed flower kingdom at your doorstep.

RIDE AN OSTRICH AT OSTRICH SHOW FARM (OUDTSHOORN)

Address: Cango Ostrich Show Farm, 14 km from Oudtshoorn, Klein Karoo / Garden Route. **Telephone:** +27 (0)44 272-4623 **Opening hours:** Daily from 09h00 to 17h00.

To ride an Ostrich, visit one of the Ostrich Show Farms in Oudtshoorn, South Africa. Here you can observe large flocks of Ostriches at different stages of development. There are petting areas where you can cuddle the chicks or feed an ostrich by hand, watch how feather dusters and boas are made.



Professional multilingual guides take you on a conducted tour where you will learn about the birds surrounded by thousands of ostriches. Visit the Restaurant where you can try an Ostrich Steak or the Ostrich egg (which feeds 20 people), can be tasted together with Ostrich Paté and Biltong. You can also visit the shop on site and purchase exclusive leather handbags and feather boas and a variety of decorated and plain Ostrich eggshells, Ostrich paté's and biltong (traditional dried meat) and other delicatessen are available at these shops. And then if you feel really brave you can try to sit on an ostrich or you can actually try to ride an ostrich (at your own risk!)

RISTORANTE ENRICO (PLETTENBERG BAY)

Address: Main Beach, Keurbooms Strand, Plettenberg Bay, Garden Route **Telephone:** +27 (0)44 535-9818 **Opening hours:** Please enquire.

It's not often that us South Africans stumble across authentic Italian cuisine, so we're always delighted to find a gem like Enrico's that would make any Italian proud. With its mind-blowingly beautiful position and lip-smacking menu, Ristorante Enrico has the winning combination of delectable views and delicious food.

Start with the anti pasti menu, consisting of Italian favourites such as insalata di mare, which includes prawns,



mussels, a piece of linefish and calamari strips, or the more South African flavoured kudu and avocado dish. Fresh seafood is prepared with expert Italian flare, such as the kingklip fillet, with shrimp, caper and cream sauce. Veal is served with cream and a green peppercorn sauce, or more of a lemon and white wine sauce. Linefish is baked with olive oil, white wine, a touch of garlic and 'lots of imagination'!

Pizza is kept fairly simple, with pasta is a delight, with dishes such as the penne fegetini, with chicken livers, artichokes and cream. Handmade ravioli comes dressed in a sauce of tomato, mushrooms, cream and a touch of chilli. Finish off with an unforgettable Italian dessert, like the tiramisu, tartufo and cassata or just

a simple grappa.

RIVERSDALE RIDING SCHOOL (RIVERSDALE)

Address: Riversdale Riding School, Kweekkraal Guest Farm, Riversdale, Garden Route **Telephone:** +27 (0)72 990-0359
Riversdale Riding School is located on Kweekkraal Guest Farm in the beautiful Garden Route village of Riversdale. The farm is conveniently situated on the N2 about 300 kilometres from Cape Town. As a family owned business the riding school prides itself in creating a friendly, relaxed yet professional environment for riders, camp goers and those who wish to just escape from the hustle and bustle of the urban jungle.



We offer an outstanding equestrian programme based on English style disciplines for ages four years and up of various levels ranging from beginners to advanced riders. Our flexible timetable enables riders to attend our classes at a time that suits them. Motivating and encouraging novice riders to attain confidence and establish an understanding of good horsemanship while reaching their goals is essential to us.

Apart from offering riding lessons as the core of our business we also offer great adventure camps for scholars from which we have seen great results specifically from NPO's. We also cater for relaxing student getaways and adrenalin pumping adventure weekends for the brave.

SAILS FAMILY RESTAURANT (WILDERNESS)

Address: Views Boutique Hotel & Spa, South Street, Wilderness, 6529, Garden Route.

Telephone: +27 (0)44 877-8020 or +27 (0)44 877-8021 **Opening hours:** Open daily for lunch and dinner. Bookings essential.



Join us and soak up the best view on the Garden Route, at Sails family restaurant at Views in Wilderness. Watch the whales and dolphins play in the waves or just enjoy the magnificent sunsets with a cocktail close by. Sails is a modern family restaurant offering cuisine where only the freshest local produce is used. We support local farmers and are dedicated to our community. Enjoy a light meal, lunch or dinner with us or just pop in for coffee amongst friends.

SCENIC INTRODUCTORY FLIGHT LESSON (MOSSSEL BAY)

Address: Springbok Aviation, Mossel Bay Airfield, Aalwyndal, Mossel Bay, 6500, Garden Route.

Telephone: +27 (0)82 551-2364 **Opening hours:** Booking essential. 7 days a week, during daylight hours.

Ever thought about learning to fly an aeroplane? For those who first want to experience the magic of flight before committing to training, introductory flights are offered by Springbok Aviation in Mossel Bay.

The Garden Route coast line with viewing of whales, dolphins and great white sharks makes this an unforgettable experience.



You'll get an introductory briefing by an instructor, followed by a instructional flying lesson where YOU will be flying the aircraft! Off-course, under the watchful eye of your highly experienced instructor. You will get the opportunity to do basic flight maneuvers and get a real feel of flying an aircraft.

Scenic introductory flight lesson

Mossel Bay is blessed with one of the most moderate climates in the world, ideal for flying and getting a birds eye view of the beautiful coastline. The Mossel Bay Aero Club offers a bar and restaurant facility.

Other activities at the airfield include skydiving, micro-light training and model

aircraft flying, and an adjacent horse riding school. The beautiful scenery with frequent sightings of whales, great white sharks, dolphins and seals, makes training here even more enjoyable.

SCOTTY'S RESTAURANT AND BAR (PLETTENBERG BAY)

Address: 82 Longships Drive, Treillage House, 6600 Plettenberg Bay, Garden Route **Telephone:** +27 (0)44 533-4945

Opening hours: Wednesday to Sunday from 09h00 to 22h00.

Scotty's Restaurant and Bar opened its doors during the 2010 Soccer World Cup and hasn't looked back since. The restaurant is buzzing with both regulars and new visitors ready to be treated to some exceptional dining.



Scott Rattray is both owner and head chef and creates delectable dishes with an intense passion. For breakfast why not try one of his omelettes which are made in the traditional French style, meaning that they have not been diluted with milk, cream or water or enjoy the Sunday brunch. Spoil that special someone with a dinner here and experience the great service and fantastic food.

Scott and his wife, Andy, live on a small-holding and grow a substantial amount of fresh produce which is used in the restaurant. Fresh bread is prepared daily and there is even a deli attached to the restaurant where you can take some of the goodies home to make the experience last a little bit longer.

SEA KAYAKING IN PLETTENBERG BAY (PLETTENBERG BAY)

Address: Central Beach, Plettenberg Bay, Garden Route.

Telephone: +27 (0)44 533-4897 **Opening hours:** By arrangement.

Kayak with an experienced guide from Central Beach to Robberg Nature Reserve (Plettenberg Bay). This is an amazing experience and often you will kayak with dolphins right next to you.



When you reach Robberg Nature Reserve you will kayak amongst the seals at the seal colony. Your guide will introduce you to Robberg Nature Reserve and our wonderful marine life in the bay. In whale season you will encounter these majestic mammals on your tour. All equipment is provided and beginners are welcome.

SEAL ISLAND CRUISES (MOSSSEL BAY)

Address: Garden Route Adventure Centre, 1 Marsh Street, Mossel Bay **Telephone:** +27 (0)44 691-3182 **Opening hours:** Seal Island boat trips are done hourly everyday, weather permitting.



Seal Island in Mossel Bay is populated by over 2500 Cape Fur Seals and the island is surrounded by their greatest enemy - The Great White Shark. Seal Island boat trips are done hourly everyday (weather permitting) and will take you on a boat cruise from Mossel Bay harbour around Seal Island and back. If you are lucky, you might spot some sharks, dolphins or maybe even whales (in season). Come learn more about these playful creatures.

Whales come to Mossel Bay every year to breed. Have your camera with zoom lens ready, you just might see one of them breach the surface of the water for some spectacular shots of them jumping whilst on this cruise.

SEDGEFIELD CLASSIC CARS (SEDGEFIELD)

Address: Main Street, Sedgefield, Garden Route. **Telephone:** +27 (0)44 343-1035 **Opening hours:** By arrangement.

Sedgefield Classic Cars is a Major Tourist Attraction in the Cape Garden Route and is situated on the N2 between



Knysna and the Wilderness. We boast a Huge Variety of Classic vehicles at all times and our range varies from Vintage to Post Vintage and Post '45 Vehicles. From Phaetons, Roadsters, Coupes, Sedans, Sports Cars, Commercial, Jeeps, 4x4's, Modern cars, new and old, we will help you find your Dream Car.

It has been stated on many occasions from the 100's of Visitors to our depot, that they have never seen as "Large a Variety of collectible Vehicles as seen here at our depot" compared to anywhere else! Recently opened "Car-Fee Shoppe & Motoring Memorabilia Store" at our depot to make your visit more relaxing and interesting.

SEE THE PALLINGAT EELS (STILL BAY)

Address: Stilbaai Tourism Bureau, Palingat Homestead, Still Bay. **Telephone:** +27 (0)28 754-2602

Opening hours: Daily hand feeding of the eels is at 11h00, except Sundays. During December to January they are also fed on Sundays and public holidays with the exclusion of Christmas day.



Visit the Stilbaai Tourism Bureau housed in the Palingat Homestead in Stilbaai where you will see the only tame eels in South Africa fed in the fountain adjacent to the Tourism Bureau.

These freshwater eels belong to the *Anquilla* genus of the family *Anquillidae*. The eels in the Palingat Fountain have been living here for the past 125 years. These eels move to a specific area in the ocean to mate and spawn. The larvae are carried to the mainland of Africa by ocean currents. The environment at the Palinggat Fountain seems to be ideal for the eels. Nowhere else in the country are so many eels concentrated in one secluded environment and as tame as the "Palinggat" eels.

They are pampered and cherished by the staff of the Tourism Bureau and are hand-fed daily on chicken livers which is open for viewing by the public. (See times above).

SERENDIPITY RESTAURANT (WILDERNESS)

Address: Freesia Avenue, Wilderness, Garden Route, South Africa

Telephone: +27 (0)44 882-1240 **Opening hours:** Booking is recommended.

Upmarket and chic with an emphasis on unforgettable gourmet food, Serendipity stands out as an experience that cannot be missed!

Executive chef, Lizelle Stolze is crowned with numerous awards and qualifications. Apart from excellent local and international experience Lizelle is a *dux Cum laude* student of Prue Leith Academy of Food and Wine where she gained top honours as a student. Serendipity offers a five course South African inspired table d'hôte menu.



Examples of the current d'hôte menu get our taste buds ready for taste sensations unlike any other. With starters such as caramelised onion tartlet, served with beef tongue and mustard dressing, on rocket and Melba Toast; or Cape Malay curried fish topped with salad & poppadom Crisp, avocado sambal – we realize that we're about to be blown away. Mains 'wow' us, with superb dishes such as the duo of ostrich, served in its own jus, or the rack of lamb.

Desserts have lashings of class and imagination, such as the saffron-infused milk tart, served with fruit sossaties; or you could choose the warm dark chocolate mousse served with milk stout ice-cream and mock coffee sponge.

Overall, Serendipity is serious about food and even more serious about helping you enjoy it. Make a booking and experience it for yourself.

SHARK CAGE DIVING (MOSSEL BAY)

Address: 1 Marsh Street, Mossel Bay, Garden Route **Telephone:** +27 (0)44 691-3182 **Opening hours:** Booking essential. To avoid disappointment, early booking is advised.

Dive with the Great White Sharks in Mossel Bay around Seal Island. The island is populated with over 2500 cape fur seals and is a primary hunting spot for the respected predator of the ocean, the Great White Shark. With very good sightings you will have a experience of a lifetime viewing these magnificent animals from within their own world. Very Safe and no training is needed. This is guaranteed to be one of the biggest highlights of your life. If you are lucky, you might even see one breach the water's surface..



These majestic animals are averaging 2.5 to 7 meters long and viewing them in the ocean is amazing. Viewing the action from the top is also a great treat for those who have not yet seen a shark from the boat. This is also a boat trip and the seals from Seal Island will be seen, so bring those camera's and binoculars along.

SHOP AT THE KNYSNA FRIDAY MARKET (KNYSNA)

Address: Off Welbedacht Road, Knysna, Garden Route. **Telephone:** +27 (0)44 382-5316 **Opening hours:** From 16h00 to 20h00 every Friday.

As the name suggests, the Knysna Friday Market takes place from 4pm to 8pm every Friday night. What a perfect way to end the week; pack up the kids and head out to the market site to meet up with friends.



A wide array of food is available from pizza and pancakes to a Thai dish from the Thai Kitchen. A bar is available so you won't go thirsty! Gather up your friends and enjoy Friday night at the Market - it will probably become a regular feature on your weekly calendar.

SHOPPING AT LANGEBERG MALL (MOSSEL BAY)

Address: Langeberg Mall, Louis Fourie Drive, Mossel Bay, Garden Route. **Telephone:** +27 (0)44 695-2880
Opening hours: Monday to Friday from 09h00 to 18h00; Saturday 09h00 to 17h00; Sunday 09h00 to 14h00; Public Holidays 09h00 to 14h00.

This open air mall, with hints of the town's maritime history is situated literally just off the N2 and en route between



Mossel Bay and Hartenbos on the Garden Route. The Mall greets you with the smell of an ocean breeze and blue skies which will instantly put you in a relax mood and shopping will be just so much easier!

Shopping at the Langeberg Mall is hassle free with ample open and free basement parking. On offer is a variety of shops ranging from nationals such as fashion, food, jewellery, financial services and beauty outlets that will cater for your every need. Indulge in a culinary experience with restaurant chefs creating masterful meals.

The speciality shops will tickle your fancy to that special gift or just a memoir to remind you of the special and unforgettable time you had at Langeberg Mall, Mossel Bay. Regular events entertaining the whole family make Langeberg Mall the ideal family outing.

SHOPPING AT MILKWOOD VILLAGE (WILDERNESS)

Address: Beacon Road, Wilderness, Garden Route. **Telephone:** +27 (0)44 877-1888 **Opening hours:** Daily



Conveniently situated close to the Wilderness train station, the beach and lagoon, take a leisurely stroll through our magical gardens and experience our friendly hospitality and the warm service of the village shops and restaurants. Milkwood Village has quaint restaurants, shops, a small Post Office & laundry and ample parking. Discover hidden treasures in the quaint side walk shops, cafès & restaurants of Milkwood Village. Milkwood Village is situated on Beacon Road, Wilderness Village

SKYDIVE IN MOSSEL BAY (MOSSEL BAY)

Address: Skydive Mossel Bay, Mossel Bay Airfield, Aalwyndal, Mossel Bay, 6500, Garden Route.

Telephone: +27 (0)82 824-8599 **Opening hours:** 7 days a week, during daylight hours. Bookings essential.

Skydive Mossel Bay offers you the experience of a lifetime! Do a tandem skydive from 10 000ft strapped to an experienced tandem instructor and enjoy the thrill of free fall on your 1st jump! No experience required.

After a short briefing we strap you into a tandem harness and you are ready start your adventure. 1st, we ascent to altitude in the aircraft and for 20 minutes you get a fantastic scenic flight over the bay area. Then it's time to jump

out! Before you know it, the tandem master has you out of the aircraft and in free fall. We'll free fall at 200 - 290 kph for up to 40 seconds. While we "Body Surf" the wind, we can do controlled turns, speed diving, and burn up the sky. Skydive in Mossel Bay

All too quickly you will find the parachute opening and your adrenaline charged free-fall transitions into a quite peaceful parachute decent, where you and your instructor can talk and share the moment with you.

During the 5-7 minutes it takes to reach the ground your instructor can provide either a sedate gentle ride to the ground or a more radical roller coaster experience demonstrating spins and stalls as he skilfully takes you to our landing area.

Videos / DVD of your skydive also available at an additional fee. Certification courses are also available on selected weekends. Please call to book you skydive in advance as seats are limited.



SKYDIVE IN PLETT (PLETTENBERG BAY)

Address: Robberg Road, on the right just before the Airport Buildings, Plettenberg Bay **Telephone:** +27 (0)82 905-7440 **Opening hours:** Monday to Sunday from sunrise to sunset.

This is definitely something for the adrenalin junkies, get your heart racing when you jump out of the plane with your tandem master and feel the rush of the 35 second free fall at 200 kilometres per hour. This is one of the most beautiful places on earth to experience a tandem sky dive.



Start the trip off with a 20 minute flight which climbs to over 10,000 feet and if you're not too nervous enjoy the breathtaking views of both the Knysna forests and the coastline before you take a leap of faith and have an experience of a lifetime. The instructors are experienced and your safety is their number one priority.

Sunset Cruise on the Seven Seas (Mossel Bay) **Address:** Vincent Jetty, Mossel Bay, Garden Route.

Telephone: +27 (0)44 691-3371 **Opening hours:** By arrangement.

The Seven Seas is a 60 foot, motorized luxury catamaran and has been expertly fitted in order to ensure all her passengers will enjoy the cruise in a style, which benefits the stunning views. We have a stunning bar onboard with a capable crew which are always available to meet your needs.

We offer dining facilities, Hour Trips, Seal Island Trips, Sunset Cruises and Champagne Breakfasts. We can comfortably accommodate 65 people. We offer excellent Pub lunches, dinners or just delicious cake and tea. In the evenings we have a 2½ hour sundown cruise with a cocktail and a three course meal. We value your choice and offer something new for old and young. We also adapt our prices for all our senior citizens.

SURF CAFÉ (PLETTENBERG BAY)

Address: Shop 10, Beacon Isle Centre, Plettenberg Bay, Garden Route, South Africa **Telephone:** +27 (0)44 533-6801

Opening hours: Monday to Sunday from 08h30 until late.



Surf Café in Plett on the Garden Route prides itself on being a 'social food' venue. Not a pub, not only a restaurant, Surf Café was the invention of a man passionate about surfing and food. The simple menu consists of meals of a high standard, with the Indian Ocean as a backdrop. Try your hand at surfing at the surf school and work up a real appetite before enjoying the unique vibe at Surf Café. More than a restaurant, Surf Café is an experience of local surf culture. Start off with punchy snacks such as the Nachos Pequeños - crisp corn tortilla chips baked with refried beans and cheese topped with salsa, sour cream and guacamole, or the sticky chicken wings and satay sauce, consisting of 3 chicken wings prepared in our sweet Indonesian marinade, served with a spicy peanut dipping sauce.

The mains menu is also Mexican inspired, with dishes such as the refried beans, tacos, quesadillas and enchiladas made to perfection, with a host of toppings and fillings. Homemade burgers are served on a soft roll, with a side of chips.

Finally, the dessert menu begs for attention, with delights such as chocolate brownies served with vanilla ice cream, lemon tart served with fresh cream, mojito sorbet or a dom pedro.

TANDEM JUMP ABOVE THE BAY (MOSSSEL BAY)

Address: Garden Route Adventure Centre, 1 Marsh Road, Mossel Bay

Telephone: +27 (0)44 691-3182 **Opening hours:** By arrangement, please contact us to book.

Jumping out of an airplane at 10 000 feet plunging towards the earth at 250 kilometres per hour sounds crazy right?



Well, one of the ultimate experiences you will ever do is skydiving. Safe and maximum fun! Try a tandem jump above the bay with spectacular and breathtaking views. Experience the quietness in the air while gliding slowly towards the earth taking it all in ...

Courses can be done. The beginners course takes about 8 hours of training.

TENIKWA WILDLIFE AWARENESS CENTRE (PLETTENBERG BAY)

Address: Forest Hall Road, The Crags, Plettenberg Bay, Garden Route. **Telephone:** +27 (0)44 534-8170

Opening hours: Daily. Tours depart every half an hour from 09h00, with the last tour leaving at 16h30.

Tenikwa Wildlife Awareness Centre at Plettenberg Bay offers a truly unique Wildcat Experience. Guests are taken on a guided tour to meet captive-bred furry felines, living in a semi-natural environment. So close, you can hear them purr ...



During the one hour guided tours you are guaranteed to see the charismatic Cheetah, ZweLakhe the Leopard and enjoy a cat and mouse game with South Africa's seldom seen Lesser indigenous cats, such as the African Wild Cat, Servals, Caracal and the rare Black-Footed Cat. Experience the inquisitiveness of the busy Meerkats, watch the Blue Cranes dance and take pleasure in getting to know the mischievous Marabou Storks.

For the more adventurous we offer a walk with the Tenikwa Cheetahs. Take an exhilarating stroll through Tsitsikamma Indigenous Forest and Cape Floral Fynbos as you join the Tenikwa Cheetahs on their daily walk. A unique and personal

experience with these amazing animals, the Cheetah Walk will stay with you for life.

At Tenikwa, our animals speak for those who have no say. Learn about their struggle for survival in the wild during our guided tours. Your support funds our Wildlife Rehabilitation and Release Program. Give us an hour of your time and we will change your life.

THE ANCHORAGE (KNYSNA)

Address: 11 Grey Street, Knysna, 6570, Garden Route **Telephone:** +27 (0)44 382-2230 **Opening hours:** Please enquire.

Having been around for twenty years, The Anchorage can proudly state that they are one of Knysna's favourite restaurants! If it's an unpretentious evening out you're looking for, this restaurant promises traditional seafood and top notch steaks.



For starters, The Anchorage wows us with their Kudu Carpaccio and selection of seafood. The seafood mains include an array of perfectly prepared fresh fish, from the fillet of marlin, to the buttery sole. Other seafood mains that caught our eye were the butterflied prawns, seafood kebabs and calamari steak – delicious! The 'Captain' advises us from his helm, with a selection of lip-smacking combo's, including The Anchor Platter, with mussels, prawns, calamari and linefish; or the calamari, steak and prawn combo, which tickled our fancy.

'From the Captain's Grill' we have a few seriously meat dishes to sink our teeth into: from the Angus beef fillet and the Surf and Turf, to the beef

stroganoff. Finish off with some choice desserts from 'The After Deck', including warming Malva pudding or the dreamy Amarula crème Brule.

THE BAY CAFE (HEROLDS BAY)

Address: The Herolds Bay Hotel, Spekie Crescent, Herolds Bay, Garden Route. **Telephone:** +27 (0)44 872-9011

Situated in the Herolds Bay Hotel, The Bay offers deli style breakfasts and lunches, coffee, cocktails and drinks.



Whether you are out for a stroll on the beach and in need of a great coffee and pastry, or if you're out for a party with friends and are looking for the best cocktail in stylish surroundings. Join us for breakfast and lunch.

THE DRY DOCK FOOD CO (KNYSNA)

Address: Shop 1, The Waterfront Knysna Quays, Knysna, Garden Route. **Telephone:** No telephone number supplied.

Opening hours: Monday to Sunday from 12h00 to 22h00.



With three separate floors, this lagoon-side restaurant based at the Knysna Waterfront knows how to deliver a memorable experience. With its exceptionally beautiful position, eating here is a truly unforgettable experience. Stop in for a light lunch and try a few items from the lunch menu, from 12pm – 6pm daily. Baguettes are filled with scrummy fillings, including deli cheeses and meats, with salads. All your favourites are here, but done to perfection with gourmet flair: burgers, prego rolls, salads and wraps. The lunch seafood selection positively excites our taste buds, with gorgeous grilled seafood and an array of combo meals to cover all your bases. The dinner menu kicks off with a few lip-smacking starters, including cultivated oysters and West Coast mussels. For mains, the seafood specialities seem like a must-have, boasting a fish curry and

linefish Fontana, amongst delish dishes.

Next, Dry Dock offers every variety of prawn you can imagine, so save space for those! There is also a fantastic selection of other dishes, from curries and stir-fries, to burgers and steaks – all done with that Dry Dock flair. Dry Dock is the perfect evening restaurant venue, with views, ambiance, energy and a brilliant menu. Order a bottle of crisp white wine to enjoy with your seafood and unwind with coffee and dessert. Perfection.

THE GIRLS (WILDERNESS)

Address: 1 George Road, Wilderness, Garden Route. **Telephone:** +27 (0) 44 877-1648

Opening hours: Booking is essential! Tuesday to Sundays from 16h00 onwards. Closed on Mondays and closed for the month of June.



Highly recommended by anyone who has ever eaten there, The Girls is an unlikely forerunner for top restaurant in the Wilderness, due to its less-than-appealing location, but excellent food and bucket loads of charm make it shine! Expect a kooky atmosphere with lashings of quirk, peppered with African curios and art. On the starter menu, there are 'oysters, oysters and more oysters'! The Girls wow with succulent Cajun spiced strips; steak tartare; matured fillet and escargots, amongst other delicious starter dishes. Then there are the prawns - cooked in ways you've never imagined, from smoky Mexican to lemongrass and sesame! Patrons swear the steak is the best they've ever had, served with a selection of delectable sauces - and melt-in-your-mouth tender. AAA Karan beef fillet, rib eye and sirloin steaks are cooked to perfection, and served with potatoes and

vegetables. Seafood and fresh fish are cooked to perfection, while their Thai influenced curries are perfect for those chilly nights. Round off your experience at The Girls with a 'Dune Wedge' or Crème Brule and a delicious Irish coffee - word is, you'll probably want to come back again the night after.

THE HARKERVILLE HIKE (PLETTENBERG BAY)

Address: Plettenberg Bay, Garden Route **Telephone:** SanParks Knysna Office on +27 (0)44 302-5606

Opening hours: On request.



The two day Harkerville hike starts gently; following paths through the forest that criss cross over horse and bike trails. However, the hard work starts as you reach the chain section. Not for the faint hearted, the rock face only has a very narrow ledge with space for feet and with a metal chain at chest level. It's all worth it though for the dramatic and breathtaking views of the beach.

Although the Harkerville Hike is a difficult and at times relentless 27km hike, it is beautiful and the path is clearly marked and well maintained.

THE HEATH (PLETTENBERG BAY)

Address: Off the N2 towards Knysna, 7km from Plettenberg Bay, Garden Route **Telephone:** +27 (0)44 532-7724

Opening hours: Please enquire



The Heath is more than a farm-stall, it's a bohemian store that has a craft shop, food store, kitchen, various forest based activities, a lavender labyrinth and last but not least many child-orientated activities.

The craft shop offers a mix of mostly locally produced crafts ranging from toys to kitchenware and décor and gifts. If shopping is not on your agenda for the day, wander through the lavender labyrinth or perhaps grab a hammock and take a nap! If you need to work up a bit of a hunger before lunch, try your hand at a game of boules. Children are entertained with a foofie-slide, jungle-gym, swings and merry-go-round.

THE HEATH

Jade's Café is open for breakfast, lunch and tea and offers tasty, homestyle meals.

The store offers an array of preserves, jams and other sweet treats. Also on the list are fresh veges and free-range eggs. The veges have no pesticides and are handpicked before being delivered straight to the store.

Additional Reading

For a first hand review and more photos see our article at "[The Heath](#)".



THE KINGFISHER RESTAURANT (MOSSEL BAY)

Address: Point Road, The Point, Mossel Bay, Garden Route **Telephone:** +27 (0)44 690-6390

Opening hours: Please enquire.

With its beachfront location, unequalled seafood selection and fresh sushi, The Kingfisher has all the right ingredients for a perfect holiday dining experience.

Kick off the meal with California rolls or a sushi platter, with fresh sashimi and hand rolls, fashion sandwiches and maki sushi on offer. Move onto the delicious seafood starters, including calamari, mussels prepared in various ways, seafood chowder and a variety of other lip-smacking delicacies. If you are a calamari fan, you'll have come to the right place. Calamari comes in every shape and form, from grilled to pan-fried in strips, steaks and rings.



Mains entice us with the delectable and perfectly prepared fish selection, from angelfish to kabeljou. Crayfish and oysters beckon – why not? It's your holiday! The Kingfisher offer a variety of seafood platters, perfect for big groups who want to sample a little of everything. Try the King platter; a combination of 6 garlic mussels, calamari and 4 medium prawns, grilled hake and a crabstick. The Kingfisher know how to do meat: stuffed ostrich, ostrich fillet, t-bone steak, ribs,

all served with rice or chips, with a selection of delicious sauces to choose from.

THE KITCHEN CAFÉ (PLETTENBERG BAY)

Address: Noel Centre, Main Street, Plettenberg Bay, Garden Route

Telephone: +27 (0)44 533-3693 **Opening hours:** Monday to Saturday: Lunch from 12h00 to 15h00.

Dinner from 18h00 til late.

Stop by for either lunch, dinner or some sundowners. The Kitchen Café is a great spot to spend a couple of hours in the company of good friends and great food. Previously Franco's Kitchen, the Kitchen Café brings an African flair to a café style restaurant. There is great attention to detail and service as the new owners are very hands on and will gladly assist with any questions you have.



The menu offers a vast array of dishes from juicy spring rolls, perfectly seared fresh tuna or even a thick cut steak cooked to perfection. The wine list covers both up and coming vineyards as well as popular local ones, for those who find it hard to choose there are plenty of "by the glass" options as well as a good selection of cocktails.

THE LEMON GRASS RESTAURANT (PLETTENBERG BAY)

Address: Milkwood Manor, Salmack Road, Plettenberg Bay, Garden Route **Telephone:** +27 (0)44 533-5520 **Opening hours:** Bookings recommended. Tuesday to Sunday from 12h00 for lunch and dinner.

The Lemon Grass is an extremely popular lunch venue for both residents of Plettenberg Bay and visitors of the Milkwood Manor (where it is situated). If for nothing else you should book a table at the restaurant because it boasts some of the most stunning views. The restaurant is situated on the water's edge and there are no walls so that your view is not obstructed. See the gorgeous Tsitsikamma mountain range and the lagoon from all angles. The friendly and warm attention of the staff will make you feel right at home. Not only are the views beautiful but the food is equally as beautifully presented and matches the presentation in full flavours. The menu includes only the freshest seafood as well as a variety of meat and game dishes for the carnivores. If you're wanting to visit the restaurant during High Season (usually between December and April) it is advisable to book so that you're not disappointed.



THE LIGHTHOUSE RESTAURANT (MOSEL BAY)

Address: Point Road, The Point, Mossel Bay, Garden Route **Telephone:** +27 (0)44 691-3512

Opening hours: Monday to Sunday from 07h00 til late.

Located at a lighthouse at the wave's edge, The Lighthouse is one of the most spectacularly situated restaurants along the Garden Route. A delectable selection of South African favourites awaits you on the menu, sprinkled with perfectly prepared seafood and succulent steaks from the grill.



The chilli prawn and sesame noodle salad catches our eye on the starter menu, as well as the lamb's liver pan-fried with balsamic onions and served with garlic mash, and the flash fried calamari.

For mains, the fresh cob, seared and oven baked and served with a lemon cream sauce sounds out of this world. We're happy to find good ol' beer battered fish and chips on the menu, with mussels in a spicy tomato and coriander. Rump, T-bone and fillet steak are all locally sourced and well matured before portioning. The Point takes pride in serving the best South

African dishes, with their own flair.

Harissa Chicken is spiced Moroccan style chicken, slowly braised in harissa paste; Slow Braised Lamb Knuckle is braised in white wine, with tomatoes and rosemary, served with garlic mash and seasonal vegetables.

THE LOST PLOT (KNYSNA)

Address: Corner of Swart and Lake, Knysna, 6570, Garden Route. **Telephone:** +27 (0)44 381-0099, Mobile: +27 (0)76 311-3020 **Opening hours:** Please enquire.

Residential guests and day visitors to Brenton Hill Self Catering in Knysna are welcome to enjoy the facilities at The Lost Plot, a beautiful natural setting with unspoilt outstanding views stretching across Knysna Lagoon towards the Outeniqua mountains.



Facilities available at The Lost Plot include an enclosed safe jungle gym, a foefie slide and ample outside seating areas. Adults can spend some quiet moments taking in the beautiful scenery whilst the children can run free, enjoying the natural spaces or fly through the air on the foefie slide. For the smaller children, the fenced and gated jungle gym provides safe play area.

An ideal venue for parties where all are welcome. The Lost Plot is a relaxed venue you will want to come back to again and again.

THE OLD HOUSE SHOP (PLETTENBERG BAY)

Address: 5 Kloof Street, Plettenberg Bay, Garden Route **Telephone:** +27 (0)44 533-2010 **Opening hours:** Please enquire.

Come and visit Plettenberg Bay's first house - that's correct, The Old House Shop is situated on Erf. 1, Plettenberg

Bay. The property was built in 1910 and the owner, Susie Ovenstone, has ensured the charm of this house remains.



She has carefully selected and displayed items to show them off to their best potential. This is the perfect shopping experience and you will find a plethora of choice from kitchen and bathroom accessories to jewellery, clothing for ladies, gents and little ones and much more. And when you need a break from the shopping sit down and relax with a cup of tea or a light snack at the Oak Tree Coffee Shop which has made its home in the courtyard annex.

If you're looking for the perfect gift this should be your first stop.

THE RED BARN RESTAURANT & COUNTRY STORE (KNYSNA)

Address: Fern Gully Farm, Rheenendal, Road, Knysna, Garden Route **Telephone:** +27 (0)82 739-0962 **Opening hours:** Wednesday to Sunday and Public holidays from 09h00 to 16h00
Friday night the kitchen closes at 22h00.



Scrumptious memories are created where the Rheenendal farmlands meet the indigenous forests of Knysna at The Red Barn Restaurant & Country store.

The newly renovated, 20 year old Cape Cod style barn provides access to unique local art, fresh produce from neighbouring farms and delicious cuisine from our talented chef. The menu is inspired by seasonal produce and features artisan meats and cheeses a variety of pickles, preserves & mayonnaise - all made on the premises or locally. The wine list is affordable yet features spectacular wines such as Bramon Methode Cap Classique, the Bonnievale Vertex range and award winning Arabella wines.

This spectacular venue, nestled amongst Macadamia nut orchards and overlooking a lily filled dam, lends itself as a venue for special occasions - a true country style wedding; the end point of a lovely

cycle through the Homtini mountain bike trail or Millwood Forest hikes; or just lazy long lunches with friends and family.

THE ROSE RESTAURANT (GEORGE)

Address: 127 York Street, George, Garden Route, South Africa

Telephone: +27 (0)44 874-6519 or +27 (0)76 902-3910 **Opening hours:** Open for lunch and dinner from Monday to Saturday. Closed on Sundays.

The Rose prides itself on serving delicious, hearty gourmet cuisine in a sumptuous, upmarket setting. Referred to as one of George's hidden gems by those who have discovered it, we're easily coaxed by their lip-smacking menu offerings.

From the classic prawn cocktail, to the calamari done Portuguese style, The Rose's starter menu is a Mediterranean influenced feast of the senses. Beef Carpaccio is drizzled with olive oil and balsamic, with touches of pecorino and capers, while the Mediterranean platter is filled with delectable tappas, pesto, hummus, pate and cured meats. The seafood menu continues to impress, with fresh line fish, LM King prawns and calamari catching our eyes and making our taste buds pucker. Peri-peri chicken is served Mozambique style, and pasta lovers will enjoy the lasagne or the basil pesto pasta.



Now if you're looking for something meaty to sink your teeth into, you've come to the right place! All the beef served at The Rose is chosen for quality and then matured for full flavour and tenderness. You'll find it difficult to choose from the

sirloin, rib-eye and rump, which are all served with chips or baked potatoes, smothered in 'delish' sauces such as Portobello mushroom and or Madagascan green peppercorn sauce. The rump is trimmed and cut to perfection, and flambéed in port and brandy. The Karoo lamb chops sound utterly irresistible, enjoyed best with creamy mashed potato and mint sauce on the side.

End off your meal at The Rose with Nanna's cheesecake and warm apple crumble.

THE TABLE (PLETTENBERG BAY)

Address: 9 Main Street, Plettenberg Bay, Garden Route, South Africa

Telephone: +27 (0)44 533-3024 **Opening hours:** Monday to Sunday from 12h00 until late.

The Table has a 'weigh and pay' concept, with a bar and take-away section, and is child friendly. The perfect gathering space for the whole family or friends looking for a vibey dinner venue on the Garden Route, The Table leans towards Italian food, offering a fantastic selection of pizzas.



The starter options kick off with haloumi and basil bruschetta, aubergine and mozzarella stack and venison carpaccio. Pastas include ricotta ravioli, creamy basil pesto, prawn and squid, anchovy, olives, capers and chilli and creamy country ham. Pizzas are deliciously decadent, with toppings such as bacon, creamed leeks and feta cheese, chourico, jalapeno, red pepper and goat's cheese or the prosciutto, fig and rocket. Delectable! End off with an Italian coffee and one of the dessert options from the enticing menu

THE THEATRE AT THE WHITE HOUSE (PLETTENBERG BAY)

Address: 6 Crescent Street, Plettenberg Bay, Garden Route **Telephone:** +27 (0)44 533-2010 **Opening hours:** Please enquire.

The curtain rises this December on a great selection of theatre, comedy and music at the White House. Housed in a beautiful historic 100-year-old building in the middle of Plettenberg Bay, the theatre plays host to a vast selection of

different performances over the summer season. The White House was designed with a theatre in mind – a vast stage space and excellent acoustics enhancing all performances, as attested to by the performers as well as theatregoers. The season kicks off on Friday 11 and Saturday 12 December with The Comedy Revolution featuring top Cape comics



Rob van Vuuren, Dave Levinsohn and Martin Evans. This offbeat show packed with sidesplitting comedy is part of their national holiday tour and not to be missed! Keep an eye out for dance, comedy, drama and children's theatre.

The children's holiday program includes drama workshops and afternoon shows for the whole family. Put together by the fantastic local group, Lunchbox Theatre, family theatre is a wonderful activity for those less-than-perfect beach days. Workshops for children include adventure and mystery drama explorations, as well as rhythm and dance workshops. For older children, Mary Steward runs morning workshops for teenagers, exploring drama techniques and creating short drama pieces that will

culminate in a performance on Sunday 20th December. Having worked extensively with the Oprah School and with other groups, Mary's workshops take teenagers on a voyage of self-discovery.

TIMBERLAKE FARM STALL & ORGANIC FOOD (SEDFIELD)

Address: Located between Sedgfield and Wilderness (10km from each), Garden Route. **Telephone:** +27 (0)44 882-1185

At Timberlake we do our best to support the local artisan producer. Most of the goods sold in our Specialist Cabins are crafted by locals who practise their skills, often handed down through generations, with passion and excellence. We take great care in sourcing the products we stock making sure our foods are fresh, wholesome and safe to eat. Supporting your health and wellbeing, each item has a story behind it and we like to make this available to you. We



turn our noses up at highly processed and degraded food and support the move to a more organic lifestyle. In our quest to seek out and promote organic products it is early days and we still have a long way to go. But at timberlake we are committed to showing that even with small steps we can each make a difference. We are passionate about supporting the Slow Food Movement, bringing back a food culture that highlights the sourcing of quality ingredients and the importance of food and cookery to community and family life. Zucchini is a restaurant in the main building bringing a modern touch to country dishes. Simple, honest food made from quality ingredients. Fresh produce is picked from timberlakes on-site organic garden daily. A taste experience for the natural foodie.

The Coffee Roastery presents you with their organic coffee, blended from four Arabica beans, professionally roasted in small batches to ensure the best in freshness and flavour. The Coffee Roastery is the perfect place to recharge. Choose a healthy light lunch and salad or a decadent slice of chocolate cake to go with your coffee.

VAALJAPIE STATION RESTAURANT (LITTLE BRAK)

Address: Little Brak River Station, 10 Hoy Street, Little Brak River, Garden Route **Telephone:** +27 (0)44 696-5878 or +27 (0)82 973-0062 **Opening hours:** It is advisable to book in advance.



The setting is "Boere Kitch" with a tongue in the cheek informality, the cooking is traditional Afrikaans cuisine. Serendipity is the word to describe this tiny restaurant. Snugly fitted into an old Railway Station, it offers an unique experience to diners who enjoy something different, yet comforting. Sporting a menu of Afrikaans Home Cooking, Including something to entice any palate.

We offer a vast variety of dishes for breakfast, lunch and dinner. Snacks and Tea-time treats are also very popular. Although we rate ourselves as an Afrikaans Restaurant there is something on the menu for every palate. We

also have a few Vegetarian dishes on offer, which does not end with a baked potato. All our dishes are prepared fresh and our salads are never the same, because they are invented and created every time by our chef. We encourage diners to "mix and match" their own meals to suit their fancy, and to forget time on our balmy platform. We suggest that you book in advance, because we are so small, we can only take a certain amount of guests at a time and in winter everybody prefers to sit inside when we light the little black stove.

VIEWS RESTAURANT (WILDERNESS)

Address: South Street, Wilderness, Garden Route. **Telephone:** +27 (0)44 877-8030 or +27 (0)44 877-8031 **Opening hours:** Bookings advised.

Situated on top of the Wilderness dunes, Views Restaurant is aptly named! With panoramic views of the ocean, exquisite food that stimulates all the senses, Views Restaurant is a must-visit. With their finger on the pulse of international foodie trends, the chefs at Views create small masterpieces, taking much of their inspiration from South African cuisine. Advocates of fresh local produce, and avid supporters of local farmers, only the freshest, ethically sourced ingredients are used in the kitchen.



Start the day with a selection of breakfast dishes, as you drink in the views over the ocean. Watch dolphins frolic in the ocean as you sit down for a lunch or dinner, for an unforgettable meal. Aged beef fillet, with potato croquettes; beef Carpaccio; fresh linefish of the day; beautifully prepared butterflied prawns and a majestic finale of desserts, all add up to a magical experience at Views Restaurant

VISIT BIRDS OF EDEN IN PLETTENBERG BAY

Address: Birds of Eden, Plettenberg Bay, Garden Route. **Telephone:** +27 (0)44 534-8906
Opening hours: Open daily from 08h00 to 17h00.



Birds of Eden in Plettenberg Bay is the world's largest single span aviary, just a few kilometres east of Plettenberg Bay in the Garden Route, where birds are free to fly free provides an incredible experience for those who visit, and a wonderful way of life for over 2000 previously caged birds. The completely unique venture of Birds of Eden is an enormous two hectare dome spanning a gorge filled with verdant, indigenous forest. Within it are some 100 species of incredible African birds, a few of them endangered, that provide anyone entering the dome with a literal experience of paradise.

VISIT FEATHERS GALLERY (KNYSNA)

Address: Corner of Uil and Patrys Streets, Industrial Area, Knysna, Garden Route. **Telephone:** +27 (0)44 382-5629
Opening hours: Monday to Friday from 08h30 to 17h00; 08h30 to 13h00 on Saturday, extended to 17h00 in season.

A wonderful and unusual shopping experience awaits you, with a combination of our full range of over 380 products on display, interspersed with a selection of bronze sculptures, and select pieces of fine African art.



Throughout the years, Feathers has repeatedly enjoyed the privilege of providing commissioned gifts of excellence to dignitaries and royalty the world over.

Most recently, Feathers provided presentations to South African President Thabo Mbeki, Deputy President Jacob Zuma, Minister Mac Maharaj and also Princess Irene of the Netherlands.

VISIT RENETTE'S CANDLE STUDIO (KNYSNA)

Address: Knysna, Garden Route (Please phone for directions). **Telephone:** +27 (0)44 381-0019

Opening hours: By appointment

The Studio of Renette's Candles is located in Knysna, South Africa - the heart of the Garden Route. Renette made her first candle when she was 13 and has remained fascinated by the creative potential of candle making.

Her candle studio and gift shop is situated on one of the few farms remaining between Knysna and the beach at Brenton On Sea. Amidst trees and birdsong Renette and her team create their exquisite and unique sand candles.



VISIT THE CAPE SEAL LIGHTHOUSE (PLETTENBERG BAY)

Address: Robberg Nature Reserve, Plettenberg Bay, Garden Route **Telephone:** +27 (0)44 533-2125 / 85

Opening hours: Open daily from 07h00 to 17h00

Built in 1950, Cape Seal lighthouse lies within the Robberg Nature and Marine Reserve on the seaward tip of what is known as Cape Seal. It forms the southern arm of Plettenberg Bay, halfway between Mossel Bay and Cape St Francis, on a coastline that is littered with shipwrecks.



Cape Seal lighthouse lies 146 metres above the sea, regarded as the highest light on the South African coast, but nonetheless nothing spectacular to look at. In fact, the lighthouse can be a bit of a disappointment to those expecting a concrete column of some stature. Instead it is a rather unattractive lattice tower.

Admittedly once there, for the lighthouse is accessible only along a five kilometre foot path, the views from the top are pretty spectacular, and because the lighthouse is not obviously accessible, the sights and sounds of seals and the sea well worth the effort of getting there.

If it is difficult to reach the lighthouse today then think of the implications for construction when it was finally built in 1950. This stretch of coastline is particularly dangerous – it is rugged and precipitous. But it took until 1926 before any plans for erecting a light somewhere on the coast between Cape St Francis and Cape St Blaize came into being. Cape Seal was chosen in 1937 but WWII slowed the process.

In 1986 the light was adapted to run on solar power and the character of the light was changed to two white flashes every thirty seconds. It is serviced today by helicopter, which is just as well, given that hikers passing this remote site cannot contemplate how difficult it must have been to drag all the cement, bricks and other material to the Robberg.

VISIT THE SILVER LILY CHEESE FARM (GEORGE)

Address: Silver Lily Cheese Farm, Geelhoutboom Road, George, Garden Route. **Telephone:** +27 (0)44 870-7424

Opening hours: Monday to Saturday from 10h00 to 16h00.

Situated on the Geelhoutboom Road on the rural outskirts of George, easily accessible from all main roads, Silver Lily Cheese Farm invites you on an aromatic cheese tasting adventure.



Enjoy handmade Dutch style farm cheese (10 flavours), watch the interesting process of cheese making then sample some in the form of a cheese platter lunch accompanied by a glass of wine or fruit juice in the tranquil surroundings of the Outeniqua Mountains.

VISIT THE TRUMILK DAIRY (PLETTENBERG BAY)

Address: Stoffpad, Wittedrif, Plettenberg Bay **Telephone:** +27 (0)44 535-9564 or +27 (0)44 535-9776

Opening hours: Monday to Friday from 08h00 to 17h00 and Saturday from 08h00 to 12h00.

Spend a relaxed afternoon in the Bitou Valley tasting award-winning cheeses and fine Cape wines and liquors at the Trumilk Dairy. The award-winning Trumilk Dairy (awarded 'best Feta cheese' in South Africa) produces Feta, cheddar cheeses and an excellent hand-made French style Camembert. Their shop, located in Wittedrif, offers carefully



selected wines from the Cape and Klein Karoo, all of which compliment the high quality cheeses which you can taste and purchase at their shop and tasting room on the farm.

VLEESBAAI 4X4 DUNE ROUTE (VLEESBAAI)

Address: Vleesbaai, Mossel Bay District, Garden Route **Telephone:** +27 (0)44 699-1107 or +27 (0)82 784-8238

Opening hours: By arrangement, Please enquire.

An Eco-Adventure amongst the dunes in the wild and magnificent Garden Route - Discover the wild beautiful side of the Garden Route on the farm 'Misgunst', situated on the Indian seaboard near the village of Vleesbaai - home to the unique Vleesbaai 4x4 Dune Route.



Apart from the thrills of a vehicle friendly 4x4 dune route challenge, there is also the option of a lush camping area that includes ablution facilities with hot water, a picnic on the beach, fishing, hiking along the beach - not to mention the thrill of experiencing some of the unique fauna and flora found only in the Southern Cape!

"...a really enjoyable dune ride 12km of pure fun that can provide drivers of all skill levels an enjoyable couple of hours. At times you're only a stone's throw from the water's edge, although no beach driving is involved." - Drive Out, Edition 4

WHALE & DOLPHIN WATCHING CRUISES (PLETTENBERG BAY)

Address: 1 Hopwood Street, Central Beach, Plettenberg Bay, Garden Route **Telephone:** +27 (0)44 533-4963 or +27 (0)82 926-6664 **Opening hours:** Daily from 08h00 to 16h00 (weather permitting) Other times possible by prior arrangement.



Discovery cruises are run on our boats which do not hold permits and are legally obliged to stay 300 meters from whales. These cruises operate all year around. We take special notice of any dolphins in the area, visit the seals and check out any seabirds, sharks and other marine species that may be around, you never know what you are going to see! (See our [Premium Close Encounter Cruise](#) to get even closer to the Whales!).

Our local skippers and tour guides provide a personalized service and give insight into the wide spectrum of marine life and geology of the area. The tour begins with a unique dry launch into the surf zone and ends with a ride straight back onto the beach.

WHALE WATCHING CRUISE WITH OCEAN SAFARIS

About Ocean Safaris: Ocean Safaris is a proud holder of one of a few Whale Watching permits allocated country-wide as well as being certified by Fair Trade in Tourism. We are SATSA boded and offset our carbon omissions through our affiliation with the Green Ticket.



Taking a cruise with us will assure you of an exclusive, legal and environmentally sensitive encounter with our marine co-habitants while we actively participate in the documenting of valuable research on whales and dolphins that we encounter during your tour. This information is forwarded to government research departments.

WILD OATS COMMUNITY FARMERS MARKET (SEDFIELD)

Address: Sedgfield, Garden Route. **Telephone:** +27 (0)44 883-1177 **Opening hours:** Every Saturday.

Over 60 stalls of the finest local farm produce, homebakes, plants and flowers, outdoor breakfast and live music - no matter what the weather does. An authentic taste of the Garden Route - fresh produce and goods every Saturday. It's the one under the trees!



This spectacular award-winning food market happens every Saturday morning, all year round, with an exceptional display of local food fare. Anyone looking to support farming & low food-mile shopping while simultaneously taking in the viny, social, town-meets-country atmosphere is promised a stunning variety of breakfasts, confectionery, fruit, meat & veg, take-home meals, flowers, indigenolus plants & more! This is an authentic taste of the Garden Route located in the beautiful Lakes District. **Additional Reading:** If you are considering a visit to Sedgfield and the Wild Oats Farmers Market, then you may find this article helpful: "[Breakfast at the Wild Oats Market](#)".

ZUCCHINI RESTAURANT (WILDERNESS)

Address: Timberlake Organic Village, Wilderness, garden Route, South Africa **Telephone:** +27 (0)44 882-1240
Opening hours: Open 7 days a week from 12h00 to 21h00.

The chic-yet-unpretentious Zucchini can be found in the Timberlake Organic Village, amongst artisan food shops and other uniquely 'Wilderness' boutique businesses. With its relaxed yet luxurious interiors and beautiful outdoor area, Zucchini has garnered attention and been awarded the accolade of Fodor's 'Restaurant of choice' in the Wilderness – and for good reason!



A glance at the breakfast menu makes as giggle, as the 'Hangover breakfast' jumps out into out sights. Lunch and dinner starters include mouth-watering taste sensations such as beef Carpaccio, a root vegetable salad and a Halloumi, nut and seed salad. Diving into the main section of the menu, we salivate at the thought of the succulent lamp chops, served with South African accoutrement. The Springbok frikkadelletjies keep within the 'proudly SA' theme, with the fillet of beef enticing us further. A small selection of pasta impresses us with tasty toppings.

Zucchini boasts a delightful dessert menu, with sticky, comfort desserts, perfect for Wilderness evenings. The cheesecake, Belgian chocolate cheesecake, milk tart and chocolate spring rolls should keep patrons returning night after night.

All the information regarding things to do is supplied by SA Venues.com